

PUE “INSTITUTE OF RADIATION SAFETY “BELRAD”

APPROVED

Director of PUE “Institute of
Radiation Safety “Belrad”

_____ A.V. Nesterenko

“ _____ ” _____ 20__

SHORT REPORT

UNDER THE CONTRACT No. 48/12 DATED TO NOVEMBER 17, 2012

(December 2012 - March 2013)

Deputy director
for international cooperation

_____ V.I. Babenko

« _____ » _____ 20__

MINSK

2013

According to the Contract No. 48/10 dated to November 17, 2012 the measurements were performed in 15 settlements of Rechitsa, Lelchitsy, Chechersk and Yelsk district of Gomel region, Luninets district of Brest region, Cherikov district of Mogilyov region and Minsk district of Minsk region from December 2012 to March 2013. A total number of measurements – 6409 (2930 second measurements) including 5842 measurements of children. Children received 3496 bottles of VITAPECT-3. 94 food samples were measured

Hereinafter there are data of the statistical data of the results of measurements performed in the village Nisimkovichi of Chechersk district and Stodolichi of Lelchitsy district of Gomel region as well as in the town Cherikov of Mogilyov region.

1. NISIMKOVICHI

Characteristics	Value	Source
¹³⁷ Cs contamination density of the territory	5,65 Ci/km ²	Dose catalogue of the Ministry for Public Health Services of the Republic of Belarus, 2004
Number of inhabitants	328 persons	Nisimkovichi village council, dated to 01.01.2010
External dose	0.68 mSv/a	Dose catalogue of the Ministry for Public Health Services of the Republic of Belarus, 2004
Internal dose	1.20 mSv/a	-----«-----
Cumulative dose	1.88 mSv/a	-----«-----

According to the data from January 2012 in the Nisimkovichi kindergarten and secondary school there are 49 children and 17 preschool children.

Children from following settlements go to the Nisimkovichi kindergarten and secondary school: Nisimkovichi, Rudnya-Nisimkovichi, Gayek, Gatskoye and Klyuchevoy.

November 28, 2012

The first measurement of children in the Nisimkovichi secondary school and kindergarten of Chechersk district of Gomel region was performed in the school building. A total of measured persons was 60 persons (58 children and 2 adults).

Average ¹³⁷Cs specific activity in the whole group (n = 58): (44.3 ± 1.1) Bq/kg.

Average ¹³⁷Cs specific activity in the critical group (n = 15): (54.5 ± 0.7) Bq/kg.

Median value in the whole group: 45.5 Bq/kg.

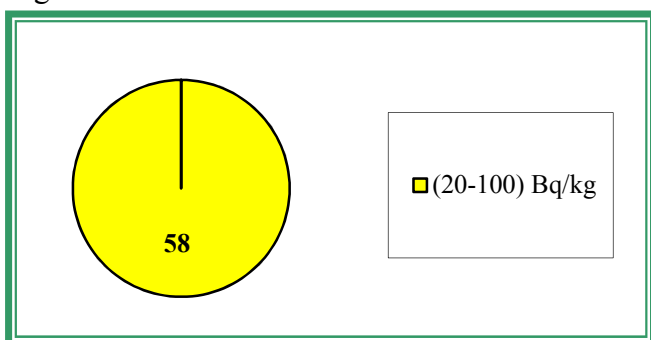
Median value in the critical group: 55.2 Bq/kg.

The table 1 demonstrates the maximal levels of ¹³⁷Cs specific activity (the critical group) according to the results of measurements dated to November 28, 2012.

Table 1

No.	Surname Name Patronymic	Occupation	Sex	Weight, kg	Year of birth	Sp. activity, Bq/kg
1.	B.A.N.	SCHOOLGIRL	F	22	2004	58.6
2.	N.D.A.	SCHOOLBOY	M	32	2002	57.6
3.	F.D.V.	PRESCHOOL CHILD	F	17	2007	57.5
4.	A.K.A.	SCHOOLGIRL	F	36	2002	57.4
5.	Ts.V.A.	PRESCHOOL CHILD	F	16	2009	56.9
6.	P.D.V.	SCHOOLBOY	M	28	2003	55.9
7.	S.V.V.	SCHOOLBOY	M	34	2000	55.4
8.	Kh.N.N.	SCHOOLBOY	M	29	2003	55.2
9.	S.E.S.	PRESCHOOL CHILD	M	19	2007	53.8
10.	A.V.A.	SCHOOLGIRL	F	27	2005	53.3
11.	K..A.S.	SCHOOLGIRL	F	30	2003	53.0
12.	P.A.V.	PRESCHOOL CHILD	M	18	2007	52.7
13.	B.E.P.	SCHOOLGIRL	F	28	2001	50.5
14.	K.V.M.	SCHOOLGIRL	F	31	2003	50.0
15.	P.A.I.	SCHOOLBOY	M	42	2000	49.9

The figure 1 contains the diagram of the interval ^{137}Cs specific activity distribution in pupils in the Nisimkovichi secondary school and kindergarten of Chechersk district of Gomel region in accordance with the results of measurements dated to November 28, 2012.



←Figure 1 - Diagram of the interval ^{137}Cs specific activity distribution in pupils in the Nisimkovichi secondary school and kindergarten of Chechersk district of Gomel region in accordance with the results of measurements dated to November 28, 2012

December 20, 2012

The second measurement of children in the Nisimkovichi secondary school and kindergarten of Chechersk district of Gomel region was performed in the school building. A total of measured persons was 66 persons (60 children and 6 adults).

Average ^{137}Cs specific activity in the whole group (n = 60): (36.6 ± 1.1) Bq/kg.

Average ^{137}Cs specific activity in the critical group (n = 15): (47.4 ± 1.4) Bq/kg.

Median value in the whole group: 36.8 Bq/kg.

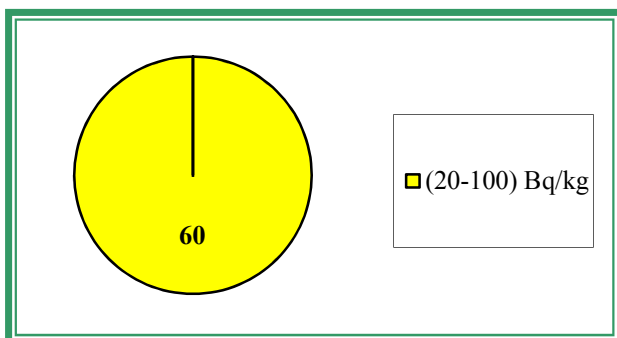
Median value in the critical group: 47.0 Bq/kg.

The table 2 demonstrates the maximal levels of ^{137}Cs specific activity (the critical group) according to the results of measurements dated to December 20, 2012.

Table 2

No.	Surname Name Patronymic	Occupation	Sex	Weight, kg	Year of birth	Sp. activity, Bq/kg
1.	H.Yu.N.	SCHOOLGIRL	F	23	2005	65.2
2.	S.E.S.	PRESCHOOL CHILD	M	20	2007	48.8
3.	V.E.N.	SCHOOLBOY	M	54	1998	48.4
4.	I.M.N.	SCHOOLGIRL	F	43	2000	48.1
5.	B.Ya.V.	SCHOOLBOY	M	56	2002	48.0
6.	Z.S.S.	PRESCHOOL CHILD	M	18	2009	47.9
7.	Z.A.V.	SCHOOLBOY	M	35	2000	47.4
8.	P.A.V.	PRESCHOOL CHILD	M	19	2007	47.0
9.	T.I.Yu.	SCHOOLGIRL	F	48	1998	46.3
10.	N.D.A.	SCHOOLBOY	M	32	2002	46.3
11.	T.A.K.	PRESCHOOL CHILD	M	20	2008	45.7
12.	F.A.V.	SCHOOLBOY	M	46	1998	45.1
13.	P.V.I.	SCHOOLGIRL	F	69	1997	42.8
14.	S.M.A.	PRESCHOOL CHILD	M	12	2009	42.5
15.	B.A.N.	SCHOOLBOY	M	62	1998	40.9

The figure 2 contains the diagram of the interval ^{137}Cs specific activity distribution in pupils in the Nisimkovichi secondary school and kindergarten of Chechersk district of Gomel region in accordance with the results of measurements dated to December 20, 2012.



← Figure 2 - Diagram of the interval ^{137}Cs specific activity distribution in pupils in the Nisimkovichi secondary school and kindergarten of Chechersk district of Gomel region in accordance with the results of measurements dated to December 20, 2012

November 28, 2012

December 20, 2012

The data of statistical processing of the results of measurements of the group of children having passed two measurements and having taken VITAPECT-3 (53 children).

Average specific activity of ^{137}Cs :

after the first measurement: (44.3 ± 1.2) Bq/kg,

after the second measurement: (35.7 ± 1.0) Bq/kg.

Decrease of average specific activity of ^{137}Cs was 19%.

Reduction of specific activity: in 64% children.

The same level of specific activity: in 21% children.

Increase of specific activity: in 15% children.

The evaluation of the scientific significance according to T-Student criterion ($n = 53$): $t=7.93$. The received criterion $t > 1.96$; $p < 0.01$.

Median value after the first measurement: 44.9 Bq/kg.

Median value after the second measurement: 36.1 Bq/kg.

Decrease of median value of specific activity of ^{137}Cs was 19%.

The figure 3 contains the diagram of the interval ^{137}Cs specific activity distribution in pupils in the Nisimkovichi secondary school and kindergarten of Chechersk district of Gomel region in accordance with the results of measurements dated to November 28, 2012 and December 20, 2012.

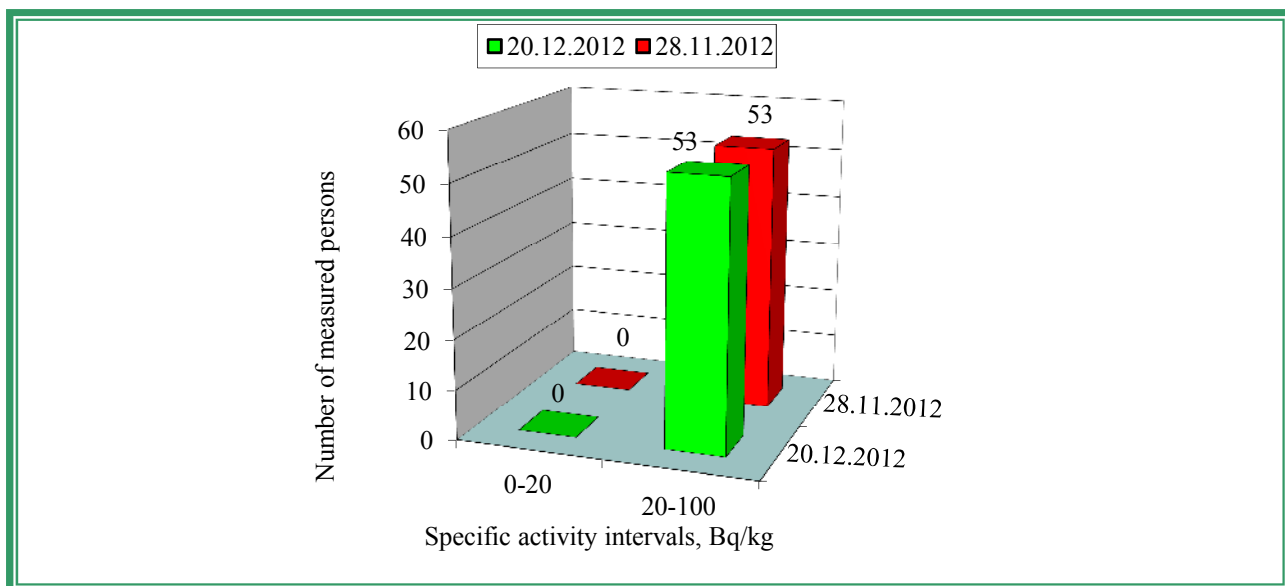


Figure 3 – Diagram of the interval ^{137}Cs specific activity distribution in pupils in the Nisimkovichi secondary school and kindergarten of Chechersk district of Gomel region in accordance with the results of measurements dated to November 28, 2012 and December 20, 2012

2. STODOLICHI

Characteristics	Value	Source
^{137}Cs contamination density of the territory	2,44 Ci/km ²	Dose catalogue of the Ministry for Public Health Services of the Republic of Belarus, 2004
Number of inhabitants	797 persons	-----<-----
External dose	0.29 mSv/a	-----<-----
Internal dose	0.40 mSv/a	-----<-----
Cumulative dose	0.69 mSv/a	-----<-----

According to the data from November 2012 there are 94 children in the secondary school and 25 preschool children in the kindergarten.

November 22-23, 2012

The first measurement of children in the Stodolichi secondary school and kindergarten was performed in the school building during two days. A total of measured persons was 98 persons (87 children and 11 adults).

Average ^{137}Cs specific activity in the whole group (n = 87): (30.8 ± 1.5) Bq/kg.

Average ^{137}Cs specific activity in the critical group (n = 15): (52.3 ± 4.8) Bq/kg.

Median value in the whole group: 29.6 Bq/kg.

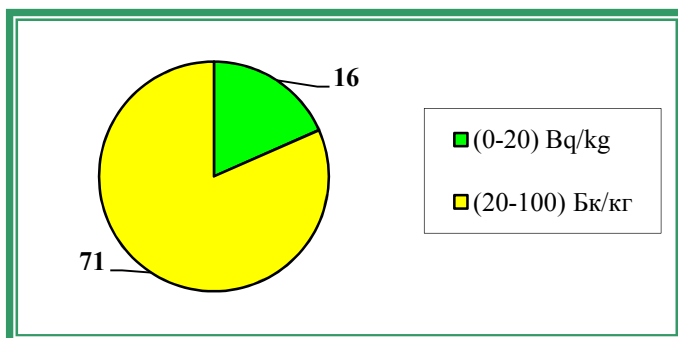
Median value in the critical group: 43.7 Bq/kg.

The table 3 demonstrates the maximal levels of ^{137}Cs specific activity (the critical group) according to the results of measurements dated to November 22-23, 2012.

Table 3

No.	Surname Name Patronymic	Occupation	Sex	Weight, kg	Year of birth	Sp. activity, Bq/kg
1.	N.D.I.	SCHOOLBOY	M	39	2000	94.3
2.	K.E.M.	SCHOOLGIRL	F	45	1998	82.5
3.	K.M.M.	SCHOOLBOY	M	58	1999	80.6
4.	J.A.N.	SCHOOLBOY	M	35	2001	56.6
5.	Sh.I.V.	SCHOOLBOY	M	54	1997	55.6
6.	L.A.Yu.	SCHOOLBOY	M	31	2003	47.7
7.	M.I.V.	SCHOOLBOY	F	30	2001	45.9
8.	J.M.N.	SCHOOLBOY	F	21	2005	43.7
9.	N.P.D.	SCHOOLBOY	F	26	2005	43.6
10.	P.V.G.	SCHOOLBOY	M	79	1997	42.3
11.	M.D.V.	SCHOOLBOY	M	34	2002	39.3
12.	K.O.V.	PRESCHOOL CHILD	F	16	2008	38.9
13.	B.V.A.	PRESCHOOL CHILD	M	15	2009	38.5
14.	Sh.I.V.	PRESCHOOL CHILD	M	13	2009	38.1
15.	M.N.V.	PRESCHOOL CHILD	M	17	2006	37.0

The figure 4 contains the diagram of the interval ^{137}Cs specific activity distribution in pupils in the Stodolichi secondary school and kindergarten of Lelchitsy district of Gomel region in accordance with the results of measurements dated to November 22-23, 2012.



←Figure 4 - Diagram of the interval ^{137}Cs specific activity distribution in pupils in the Stodolichi secondary school and kindergarten of Lelchitsy district of Gomel region in accordance with the results of measurements dated to November 22-23, 2012

December 13, 2012

The second measurement of children in the Stodolichi secondary school and kindergarten was performed in the school building during two days. A total of measured persons was 74 persons (67 children and 7 adults).

Average ^{137}Cs specific activity in the whole group (n = 67): (24.5 ± 1.8) Bq/kg.

Average ^{137}Cs specific activity in the critical group (n = 15): (43.5 ± 5.4) Bq/kg.

Median value in the whole group: 20.1 Bq/kg.

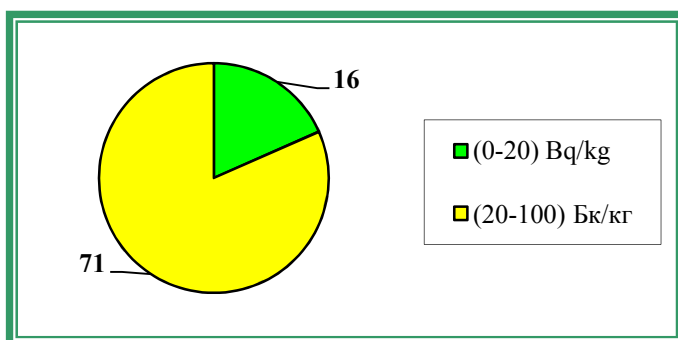
Median value in the critical group: 32.8 Bq/kg.

The table 4 demonstrates the maximal levels of ^{137}Cs specific activity (the critical group) according to the results of measurements dated to December 13, 2012.

Table 4

No.	Surname Name Patronymic	Occupation	Sex	Weight, kg	Year of birth	Sp. activity, Bq/kg
1.	J.E.N.	SCHOOLBOY	M	68	1996	88.6
2.	N.D.I.	SCHOOLBOY	M	40	2000	79.4
3.	K.E.M.	SCHOOLGIRL	F	45	1998	75.6
4.	K.M.M.	SCHOOLBOY	M	58	1999	56.8
5.	N.A.Yu.	SCHOOLBOY	M	29	2003	38.4
6.	L.A.V.	SCHOOLBOY	M	42	1999	36.6
7.	L.A.A.	PRESCHOOL CHILD	F	23	2006	33.0
8.	Sh.V.V.	SCHOOLBOY	M	65	2001	32.8
9.	N.P.D.	SCHOOLGIRL	F	26	2005	32.6
10.	M.D.V.	SCHOOLBOY	M	35	2002	30.3
11.	Sh.A.N.	SCHOOLBOY	M	36	2001	30.3
12.	M.A.A.	SCHOOLBOY	M	50	1999	30.3
13.	M.A.A.	SCHOOLGIRL	F	33	2005	30.2
14.	T.K.E.	SCHOOLBOY	M	28	2001	30.0
15.	G.M.M.	SCHOOLGIRL	F	31	2005	28.3

The figure 5 contains the diagram of the interval ^{137}Cs specific activity distribution in pupils in the Stodolichi secondary school and kindergarten of Lelchitsy district of Gomel region in accordance with the results of measurements dated to December 13, 2012.



← Figure 5 – Diagram of the interval ^{137}Cs specific activity distribution in pupils in the Stodolichi secondary school and kindergarten of Lelchitsy district of Gomel region in accordance with the results of measurements dated to December 13, 2012

November 22-23, 2012
December 13, 2012

The data of statistical processing of the results of measurements of the group of children having passed two measurements and having taken VITAPECT-3 (52 children).

Average specific activity of ^{137}Cs :

after the first measurement: (31.3 ± 2.2) Bq/kg,

after the second measurement: (24.0 ± 1.8) Bq/kg.

Decrease of average specific activity of ^{137}Cs was 23%.

Reduction of specific activity: in 58% children.

The same level of specific activity: in 39% children.

Increase of specific activity: in 3% children.

The evaluation of the scientific significance according to T-Student criterion ($n = 52$): $t=3.57$. The received criterion $t > 1.96$; $p < 0.01$.

Median value after the first measurement: 29.8 Bq/kg.

Median value after the second measurement: 20.1 Bq/kg.

Decrease of median value of specific activity of ^{137}Cs was 32%.

The figure 6 contains the diagram of the interval ^{137}Cs specific activity distribution in pupils in the Stodolichi secondary school and kindergarten of Lelchitsy district of Gomel region

in accordance with the results of measurements dated to November 22-23, 2012 and December 13, 2012

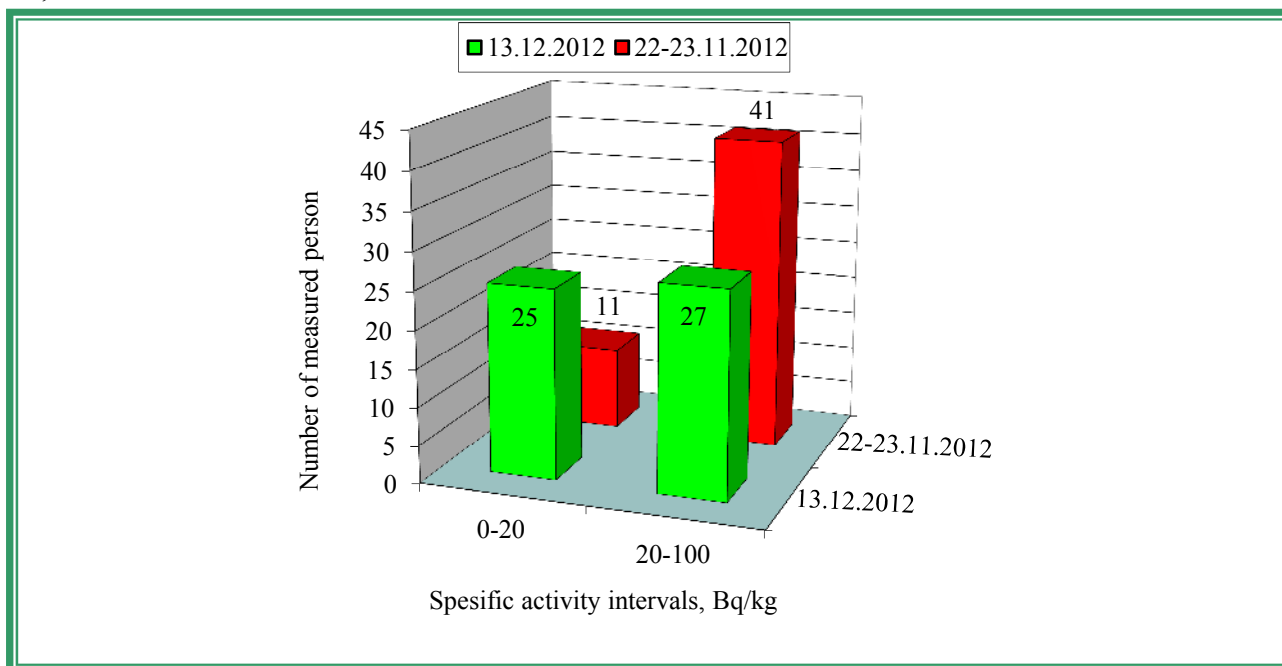


Figure 6 - Diagram of the interval ^{137}Cs specific activity distribution in pupils in the Stodolichi secondary school and kindergarten of Lelchitsy district of Gomel region in accordance with the results of measurements dated to November 22-23, 2012 and December 13, 2012

3. CHERIKOV, SECONDARY SCHOOL No. 1

Characteristics	Value	Source
^{137}Cs contamination density of the territory	4.40 Ci/km ²	Dose catalogue of the Ministry for Public Health Services of the Republic of Belarus, 2004
Number of inhabitants	8600 persons	Cherikov executive committee dated to 01.01.2011
External dose	0.53 mSv/a	Dose catalogue of the Ministry for Public Health Services of the Republic of Belarus, 2004
Internal dose	0.40 mSv/a	-----«-----
Cumulative dose	0.93 mSv/a	-----«-----

According to the data from January 2013 in the Cherikov secondary school No.1 there are 501 pupils.

Children from following settlements go to the Cherikov secondary school No.1: Cherikov, Bogdanovka, Gorki, Gronov, Latyshchino, Mirogosh and Turye.

January 29-31, 2013

The first measurement of children in the Cherikov secondary school No.1 of Mogilyov region was performed in the school building. A total of measured persons was 327 persons (304 children and 23 adults).

Average ^{137}Cs specific activity in the whole group (n = 304): (24.0 ± 0.2) Bq/kg.

Average ^{137}Cs specific activity in the critical group (n = 30): (32.2 ± 0.5) Bq/kg.

Median value in the whole group: 23.9 Bq/kg.

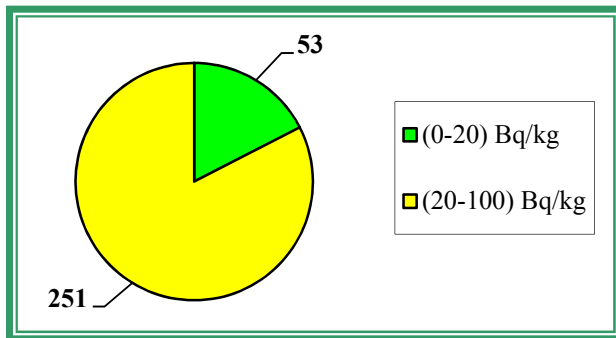
Median value in the critical group: 31.6 Bq/kg.

The table 5 demonstrates the maximal levels of ^{137}Cs specific activity (the critical group) according to the results of measurements dated to January 29-31, 2013.

Table 5

No.	Surname Name Patronymic	Occupation	Sex	Weight, kg	Year of birth	Sp. activity, Bq/kg
1.	T.V.V.	SCHOOLGIRL	F	27.0	2005	44.4
2.	T.M.L.	SCHOOLBOY	M	25.0	2006	36.7
3.	G.S.S.	SCHOOLBOY	M	27.0	2004	35.2
4.	K.M.O.	SCHOOLBOY	M	23.0	2005	34.6
5.	S.K.D.	SCHOOLGIRL	F	36.0	2001	33.8
6.	K.E.S.	SCHOOLGIRL	F	26.0	2004	33.7
7.	M.L.I.	SCHOOLGIRL	F	64.0	2001	33.5
8.	G.K.A.	SCHOOLBOY	M	33.0	2002	33.0
9.	M.D.O.	SCHOOLBOY	M	47.0	1999	32.8
10.	U.L.I.	SCHOOLGIRL	F	63.0	1997	32.1
11.	M.V.S.	SCHOOLBOY	M	23.0	2005	32.0
12.	N.A.V.	SCHOOLGIRL	F	36.0	2003	32.0
13.	C.M.S.	SCHOOLBOY	M	24.0	2006	31.9
14.	G.A.Yu.	SCHOOLBOY	M	35.0	2005	31.8
15.	R.D.V.	SCHOOLBOY	M	34.0	2003	31.7
16.	G.D.S.	SCHOOLBOY	M	32.0	2002	31.6
17.	B.E.O.	SCHOOLGIRL	F	34.0	2000	31.6
18.	S.B.Yu.	SCHOOLBOY	M	33.0	2001	31.5
19.	L.A.A.	SCHOOLBOY	M	33.0	2001	31.2
20.	E.A.P.	SCHOOLGIRL	F	19.0	2006	30.8
21.	E.D.R.	SCHOOLBOY	M	28.0	2004	30.7
22.	A.N.A.	SCHOOLBOY	M	26.0	2003	30.6
23.	L.R.R.	SCHOOLBOY	M	48.0	2000	30.4
24.	S.E.A.	SCHOOLBOY	M	19.0	2006	30.4
25.	G.A.Yu.	SCHOOLGIRL	F	38.0	2002	30.1
26.	S.E.D.	SCHOOLBOY	M	50.0	1998	30.0
27.	L.K.A.	SCHOOLBOY	M	45.0	2002	29.9
28.	K.K.A.	SCHOOLGIRL	F	45.0	1999	29.8
29.	P.A.V.	SCHOOLGIRL	F	33.0	2000	29.5
30.	D.V.V.	SCHOOLBOY	M	52.0	1998	29.3

The figure 7 contains the diagram of the interval ^{137}Cs specific activity distribution in pupils in the Cherikov secondary school No.1 of Mogilyov region in accordance with the results of measurements dated to January 29-31, 2013.



← Figure 7 – Diagram of the interval ^{137}Cs specific activity distribution in pupils in the Cherikov secondary school No.1 of Mogilyov region in accordance with the results of measurements dated to January 29-31, 2013

February 26-28, 2013

The second measurement of children in the Cherikov secondary school No.1 of Mogilyov region was performed in the school building. A total of measured persons was 428 persons (424 children and 4 adults).

Average ^{137}Cs specific activity in the whole group (n = 424): (20.4 ± 0.3) Bq/kg.

Average ^{137}Cs specific activity in the critical group (n = 30): (36.3 ± 2.1) Bq/kg.

Median value in the whole group: 19.4 Bq/kg.

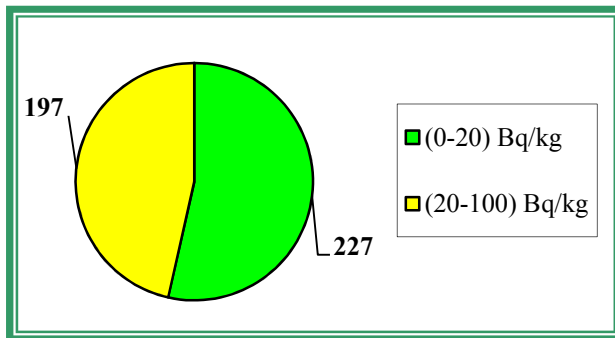
Median value in the critical group: 31.0 Bq/kg.

The table 6 demonstrates the maximal levels of ^{137}Cs specific activity (the critical group) according to the results of measurements dated to February 26-28, 2013.

Table 6

No.	Surname Name Patronymic	Occupation	Sex	Weight, kg	Year of birth	Sp. activity, Bq/kg
1.	K.A.S.	SCHOOLGIRL	F	72	1997	80.0
2.	S.K.I.	SCHOOLBOY	M	70	1997	63.1
3.	T.V.V.	SCHOOLGIRL	F	28	2005	54.6
4.	K.A.A.	SCHOOLGIRL	F	43	1997	49.9
5.	Ya.A.S.	SCHOOLBOY	M	60	1996	43.5
6.	E.M.A.	SCHOOLBOY	M	68	1997	43.4
7.	E.A.A.	SCHOOLBOY	M	40	2001	40.3
8.	U.L.I.	SCHOOLGIRL	F	63	1997	35.4
9.	A.E.A.	SCHOOLBOY	M	49	1997	34.2
10.	S.E.A.	SCHOOLBOY	M	20	2006	33.5
11.	Sh.K.D.	SCHOOLGIRL	F	21	2006	32.8
12.	E.A.N.	SCHOOLGIRL	F	47	1999	31.7
13.	Sch.D.A.	SCHOOLGIRL	F	35	2000	31.2
14.	T.V.A.	SCHOOLBOY	M	68	1998	31.2
15.	Z.A.N.	SCHOOLBOY	M	31	2001	31.0
16.	R.R.A.	SCHOOLBOY	M	26	2004	31.0
17.	M.L.I.	SCHOOLGIRL	F	64	2001	31.0
18.	G.P.N.	SCHOOLBOY	M	30	2002	31.0
19.	I.K.D.	SCHOOLGIRL	F	20	2006	30.7
20.	G.A.A.	SCHOOLGIRL	F	32	2004	30.6
21.	T.K.V.	SCHOOLGIRL	F	33	2001	30.3
22.	E.A.P.	SCHOOLGIRL	F	20	2006	30.1
23.	E.D.R.	SCHOOLBOY	M	28	2004	30.0
24.	K.T.Yu.	SCHOOLGIRL	F	48	1996	29.9
25.	T.A.N.	SCHOOLBOY	M	35	2001	29.8
26.	N.A.V.	SCHOOLGIRL	F	37	2003	29.7
27.	K.O.N.	SCHOOLBOY	M	44	2000	29.6
28.	M.A.A.	SCHOOLGIRL	F	27	2001	29.6
29.	B.N.V.	SCHOOLBOY	M	27	2006	29.6
30.	T.M.L.	SCHOOLBOY	M	25	2006	29.5

The figure 8 contains the diagram of the interval ^{137}Cs specific activity distribution in pupils in the Cherikov secondary school No.1 of Mogilyov region in accordance with the results of measurements dated to February 26-28, 2013



← Figure 8 – Diagram of the interval ^{137}Cs specific activity distribution in pupils in the Cherikov secondary school No.1 of Mogilyov region in accordance with the results of measurements dated to February 26-28, 2013

January 29-31, 2013 February 26-28, 2013

The data of statistical processing of the results of measurements of the group of children having passed two measurements and having taken VITAPECT-3 (249 children).

Average specific activity of ^{137}Cs :

after the first measurement: (24.0 ± 0.3) Bq/kg,

after the second measurement: (21.0 ± 0.4) Bq/kg.

Decrease of average specific activity of ^{137}Cs was 16%.

Increase of specific activity: in 14% children.

The same level of specific activity: in 22% children.
 Reduction of specific activity: in 64% children.
 The evaluation of the scientific significance according to T-Student criterion (n = 249):
 t=11.77. The received criterion $t > 1.96$; $p < 0.01$.
 Median value after the first measurement: 23.8 Bq/kg.
 Median value after the second measurement: 19.2 Bq/kg.
Decrease of median value of specific activity of ^{137}Cs was 19%.

The figure 9 contains the diagram of the interval ^{137}Cs specific activity distribution in pupils in the Cherikov secondary school No.1 of Mogilyov region in accordance with the results of measurements dated to January 29-31, 2013 and February 26-28, 2013

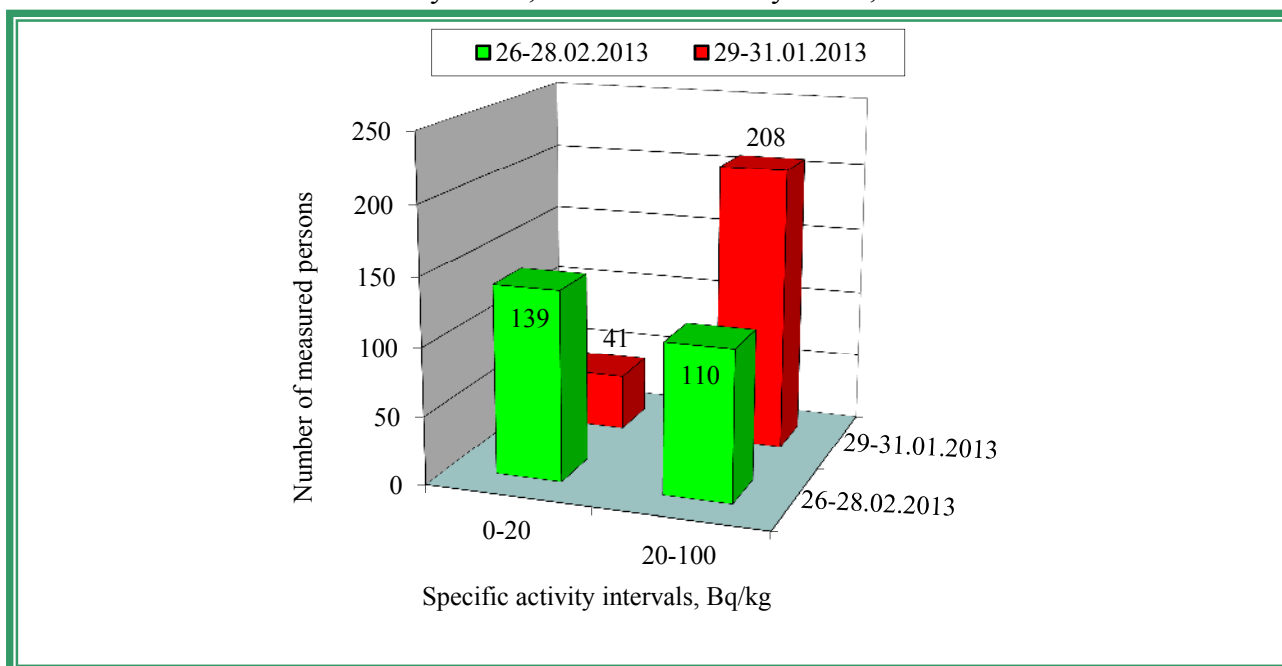


Figure 9 – Diagram of the interval ^{137}Cs specific activity distribution in pupils in the Cherikov secondary school No.1 of Mogilyov region in accordance with the results of measurements dated to January 29-31, 2013 and February 26-28, 2013

Within that period there were found 10 children with concentrations ^{137}Cs radionuclides over 100 Bq/kg.

Maximal values showed following figures:

180.8 Bq/kg – December 2012 – village Glushkovichi of Lelchitsy district of Gomel region;

107.9 Bq/kg – December 2012 – town Cherikov of Mogilyov region;

(159.1; 335.8) Bq/kg – February 2013 – village Simonichi of Lelchitsy district of Gomel region.

As it is shown in practice it is unlikely to find children with high levels of radionuclide concentration because of limited consumption of forest products (pickled or dried forest products were eaten in winter and new products should be prepared later).

4. MOBILE LABORATORY

From December 2012 to April 2013 the mobile laboratory performed 345 measurements of food samples. The measurements took place in some villages of Lelchitsy, Rechitsa and Loyev districts of Gomel region, Cherikov district of Mogilyov region

Basic products for measurements: garden and wild berries, fruits, mushrooms, game, birch juice as well as hey and ash.

The table 7 demonstrates the results of measurements of food samples with maximal concentration of ^{137}Cs radionuclides.

Table 7

No.	Place	Sample	Sp. Activity with error, Bq/kg (l)	RDU-99, Bq/kg (l)
			^{137}Cs	^{137}Cs
1.	Village Pribolovichi of Lelchitsy district of Gomel region	Dried mushrooms	5750	2500
			4420	2500
2.	Village Bukcha of Lelchitsy district of Gomel region	Dried mushrooms	3424	2500
		Frozen bilberries	2784	2500
3.	Village Simonichi of Lelchitsy district of Gomel region	Frozen bilberries	231	185
		Frozen bilberries	224	185
4.	Village Dzerzhinsk of Lelchitsy district of Gomel region	Dried mushrooms	6724	2500
		Dried mushrooms	10981	2500
		Dried mushrooms	7594	2500
		Hey	2095	1300
5.	Village Glushkovichi of Lelchitsy district of Gomel region	Frozen mushroom	9373	370
		Dried mushrooms	4457	2500
		Dried bilberries	3154	2590
		Ash	10735	10000
6.	д. Боровое Village Pribolovichi of Lelchitsy district of Gomel region	Dried mushrooms	31578	2500
		Dried mushrooms	5163	2500
		Dried mushrooms	10060	2500
		Pickled mushrooms	1814	370
7.	Village Sokolovka of Cherikov district of Mogilyov region	Game	2651	500
		Dried mushrooms	6026	2500
8.	Village Roza Luxemburg of Yelsk district of Gomel region	Dried mushrooms	7442	2500
		Dried mushrooms	6491	2500
		Dried mushrooms	70675	2500
		Dried mushrooms	54261	2500
		Dried mushrooms	73137	2500
		Frozen mushrooms	512	370
		Game	> 54896	500
		Game	4855	500
9.	Village Valavsk of Yelsk district of Gomel region	Game	3278	500
		Dried mushrooms	6292	500
		Dried mushrooms	19548	2500
		Dried mushrooms	14694	2500
		Dried mushrooms	21826	2500
		Dried mushrooms	37432	2500
		Dried mushrooms	18318	2500
Dried mushrooms	12443	2500		
Dried mushrooms	8788	2500		

No.	Place	Sample	Sp. Activity with error, Bq/kg (l)	RDU-99, Bq/kg (l)
			¹³⁷ Cs	¹³⁷ Cs
	Village Valavsk of Yelsk district of Gomel region	Frozen mushrooms	594	370
		Bilberry jam	372	185
10.	Village Soltanovo of Rechitsa district of Gomel region	Dried mushrooms	2925	2500
			3995	2500

As we can see from the table forest products are the most contaminated products that confirms our practical aspects and statements about the products which are found contaminated above permissible levels more often.

In frameworks of the Contract No. 48/12 dated to 17.11.2012 it is expected to make WBC measurements, pectin cures and measurements of food samples in Cherikov district of Mogilyov region, Lelchitsy, Yelsk and Rechitsa districts of Gomel region as well as to perform radiation monitoring of children travelling abroad to improve their health there.