

PUE “INSTITUTE OF RADIATION SAFETY “BELRAD”

APPROVED

Director of PUE “Institute of Radiation
Safety “Belrad”

_____ A.V. Nesterenko

“ ____ ” _____ 20__

SHORT REPORT

**UNDER THE CONTRACT No. 36 (ATLAS-2) DATED TO JUNE 25, 2008
(STAGES 17 AND 18)**

Deputy director
for international cooperation

_____ V.I. Babenko

« ____ » _____ 20__

MINSK

2010

Settlement	Date	Number of measurements			Quantity of VITAPECT		Notes
		expected	all	children	expected	actual	
Zalesye secondary school and kindergarten of Chechersk district of Gomel region	01.12.2009 and 12.02.2010	175	165	144	350	-	Measurements are combined
	22.02.2010	-	-	-	-	350	
	20.04.2010	175	161	151	-	-	
Merkulovichi secondary school and kindergarten of Chechersk district of Gomel region	01.12.2009	135	120	109	270	-	
	22.02.2010	-	-	-	-	270	
	25.03.2010	135	133	130	-	-	
Nisimkovichi secondary school and kindergarten of Chechersk district of Gomel region	02.12.2009	70	71	64	140	-	
	22.02.2010	-	-	-	-	140	
	22.04.2010	70	70	64	-	-	
Polesye secondary school and kindergarten of Chechersk district of Gomel region	09.02.2010	103	81	77	206	-	
	22.02.2010	-	-	-	-	206	
	24.03.2010	103	101	95	-	-	
Rovkovichi secondary school and kindergarten of Chechersk district of Gomel region	10.02.2010	98	77	67	196	-	
	22.02.2010	-	-	-	-	196	
	21.03.2010	98	83	65	-	-	
Chechersk secondary school No.2 of Gomel region	13-15.01.2010	409	482	480	818	-	762 packages were returned
	22.02.2010	-	-	-	-	818	

	23- 24.04.2010	409	401	398	-	56	d to the Institut e BELRAD because of their untimel giving to children and were sent to the schools in Narovlya district
	24.04.2010	-	-	-	-	-762	
TOTAL:		1980	1945	1844	1980	1274	

Hereafter there is a statistical data processing.

ZALESYE

Characteristics	Value	Source
¹³⁷ Cs contamination density of the territory	9.66 Ci/km ²	Dose catalogue of the Ministry for Public Health Services of the Republic of Belarus, 2004
Number of inhabitants	473 persons	-----«-----
External dose	1.16 mSv/a	-----«-----
Internal dose	1.10 mSv/a	-----«-----
Cumulative dose	2.26 mSv/a	-----«-----

According to the data dated to December 2009 in the Zalesye kindergarten and secondary school and there are 146 pupils, 29 children preschool age, 31 teachers and 10 persons of another staff.

Children from following settlements go to the Zalesye kindergarten and secondary school: Zalesye, Voznesensky, Kuklichy, Popkot, Krasny Bereg, Belyayevka and Kamenka.

December 01, 2009 and February 12, 2010

The first measurement of children in the Zalesye secondary school and kindergarten of Chechersk district of Gomel region consisted of two stages: on December 01, 2009 and on February 12, 2010 after children's recuperation. A total of measured persons was 165 persons (144 children and 11 adults).

Average ¹³⁷Cs specific activity in the whole group (n = 144): (30.1 ± 1.8) Bq/kg.

Average ¹³⁷Cs specific activity in the critical group (n = 15): (82.2 ± 8.5) Bq/kg.

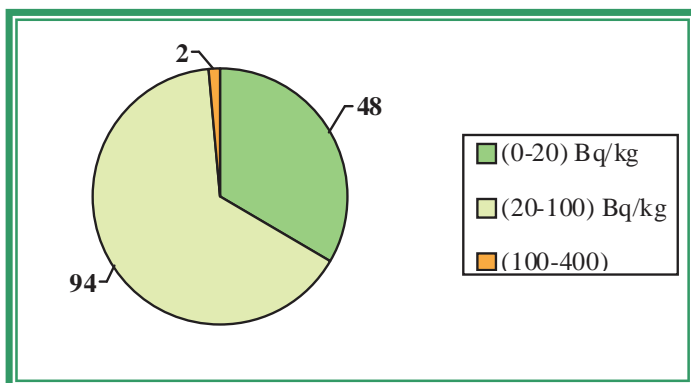
Median value in the whole group: 24.5 Bq/kg.

Median value in the critical group: 78.7 Bq/kg.

The table 2 demonstrates the maximal levels of ¹³⁷Cs specific activity (the critical group) according to the results of measurements dated to December 01, 2009 and February 12, 2010.

No.	Surname Name Patronymic	Occupation	Sex	Weight, kg	Year of birth	Sp. activity, Bq/kg
1.	N.S.V.	SCHOOLBOY	M	48	1995	160.6
2.	Z.D.S.	SCHOOLBOY	M	45	1995	149.2
3.	C.V.S.	SCHOOLBOY	M	25	2000	93.2
4.	K.T.S.	SCHOOLGIRL	F	60	1994	87.9
5.	G.P.V.	SCHOOLBOY	M	55	1994	85.3
6.	K.A.A.	CHILD PRESCHOOL AGE	F	13	2005	82.8
7.	N.A.V.	SCHOOLBOY	M	54	1992	81.4
8.	A.V.S.	SCHOOLBOY	M	36	2001	78.7
9.	A.N.S.	SCHOOLBOY	M	42	2000	77.5
10.	Z.D.S.	SCHOOLBOY	M	46	1995	63.9
11.	T.D.A.	SCHOOLGIRL	F	21	2002	61.8
12.	L.V.S.	SCHOOLBOY	M	27	2000	55.8
13.	K.I.A.	SCHOOLBOY	M	38	1999	54.3
14.	A.M.M.	SCHOOLBOY	M	40	1997	51.0
15.	T.E.V.	CHILD PRESCHOOL AGE	F	24	2004	50.0

The figure 1 contains the diagram of the interval ^{137}Cs specific activity distribution in children in the Zalesye secondary school and kindergarten of Chechersk district of Gomel region in accordance with the results of measurements dated to December 01, 2009 and February 12, 2010.



←Figure 1 – Diagram of the interval ^{137}Cs specific activity distribution in children in the Zalesye secondary school and kindergarten of Chechersk district of Gomel region in accordance with the results of measurements dated to December 01, 2009 and February 12, 2010

On February 22, 2010 350 packings of the pectin preparation VITAPECT were given for children.

April 20, 2010

The second measurement of children in the Zalesye secondary school and kindergarten of Chechersk district of Gomel region was performed in the school building. A total of measured persons was 161 persons (151 children and 10 adults).

Average ^{137}Cs specific activity in the whole group (n = 151): (26.1 ± 2.2) Bq/kg.

Average ^{137}Cs specific activity in the critical group (n = 15): (90.5 ± 12.9) Bq/kg.

Median value in the whole group: 19.4 Bq/kg.

Median value in the critical group: 72.7 Bq/kg.

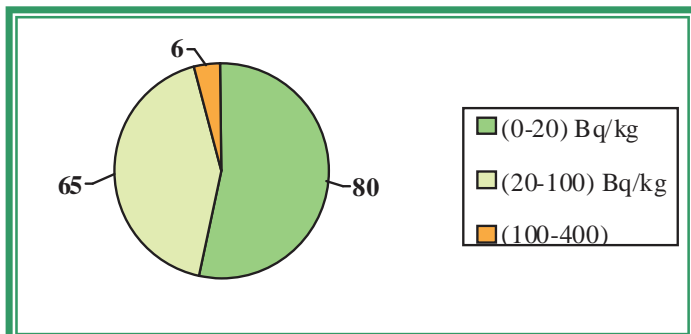
The table 3 demonstrates the maximal levels of ^{137}Cs specific activity (the critical group) according to the results of measurements dated to April 20, 2010.

Table 3

No.	Surname Name Patronymic	Occupation	Sex	Weight, kg	Year of birth	Sp. activity, Bq/kg
1.	K.K.P.	CHILD PRESCHOOL AGE	M	22	2004	203.2
2.	K.K.P.	SCHOOLGIRL	F	25	2000	163.7
3.	M.V.I.	SCHOOLBOY	M	30	1998	133.3
4.	Z.D.S.	SCHOOLBOY	M	47	1995	122.9
5.	N.S.V.	SCHOOLBOY	M	51	1995	118.0
6.	K.V.A.	SCHOOLGIRL	F	47	1995	109.4
7.	M.P.G.	SCHOOLBOY	M	20	2003	90.3
8.	A.A.S.	SCHOOLBOY	M	68	1997	72.7
9.	G.A.I.	SCHOOLBOY	M	45	1996	64.4

10.	A.N.S.	SCHOOLBOY	M	41	2000	55.8
11.	G.V.S.	SCHOOLGIRL	F	43	1997	51.6
12.	A.V.S.	SCHOOLBOY	M	36	2001	50.0
13.	K.A.A.	CHILD PRESCHOOL AGE	F	14	2005	42.0
14.	M.A.S.	CHILD PRESCHOOL AGE	F	13	2006	40.4
15.	K.I.A.	SCHOOLBOY	M	39	1999	39.4

The figure 2 contains the diagram of the interval ^{137}Cs specific activity distribution in children in the Zalesye secondary school and kindergarten of Chechersk district of Gomel region in accordance with the results of measurements dated to April 20, 2010.



←Figure 2 contains the diagram of the interval ^{137}Cs specific activity distribution in children in the Zalesye secondary school and kindergarten of Chechersk district of Gomel region in accordance with the results of measurements dated to April 20, 2010

To demonstrate the efficiency of the effects of pectin preparations there are comparative data on interval distribution of the specific activity of ^{137}Cs in children having taken VITAPECT and having passed two WBC measurements (on December 01, 2009, February 12, 2010 and April 20, 2010). This group consists of 102 children.

December 01, 2009 and February 12, 2010 April 20, 2010

The first measurement of children in the Zalesye secondary school and kindergarten of Chechersk district of Gomel region consisted of two stages: on December 01, 2009 and on February 12, 2010 after children's recuperation. A total of measured persons was 165 persons (144 children and 11 adults).

The second measurement of children in the Zalesye secondary school and kindergarten of Chechersk district of Gomel region was performed in the school building. A total of measured persons was 161 persons (151 children and 10 adults).

The data of statistical processing of the results of measurements of the group of children having passed two WBC measurements and having taken VITAPECT-T (102 children).

Average specific activity of ^{137}Cs :

after the first measurement: (29.8 ± 1.9) Bq/kg,

after the second measurement: (26.1 ± 2.8) Bq/kg.

Decrease of average specific activity of ^{137}Cs was 12%.

Increase of specific activity: in 6% children.

The same level of specific activity: in 30% children.

Reduction of specific activity: in 64% children.

The evaluation of the scientific significance according to T-Student criterion ($n = 102$): $t=1.53$. The received criterion $t < 1,96$; $p > 0,01$.

Median value after the first measurement: 25.3 Bq/kg.

Median value after the second measurement: 19.3 Bq/kg.

Decrease of median value of specific activity of ^{137}Cs was 24%.

The figure 3 contains the diagram of the interval ^{137}Cs specific activity distribution in children in the Zalesye secondary school and kindergarten of Chechersk district of Gomel region in accordance with the results of measurements dated to December 01, 2009, February 12, 2010 and April 20, 2010.

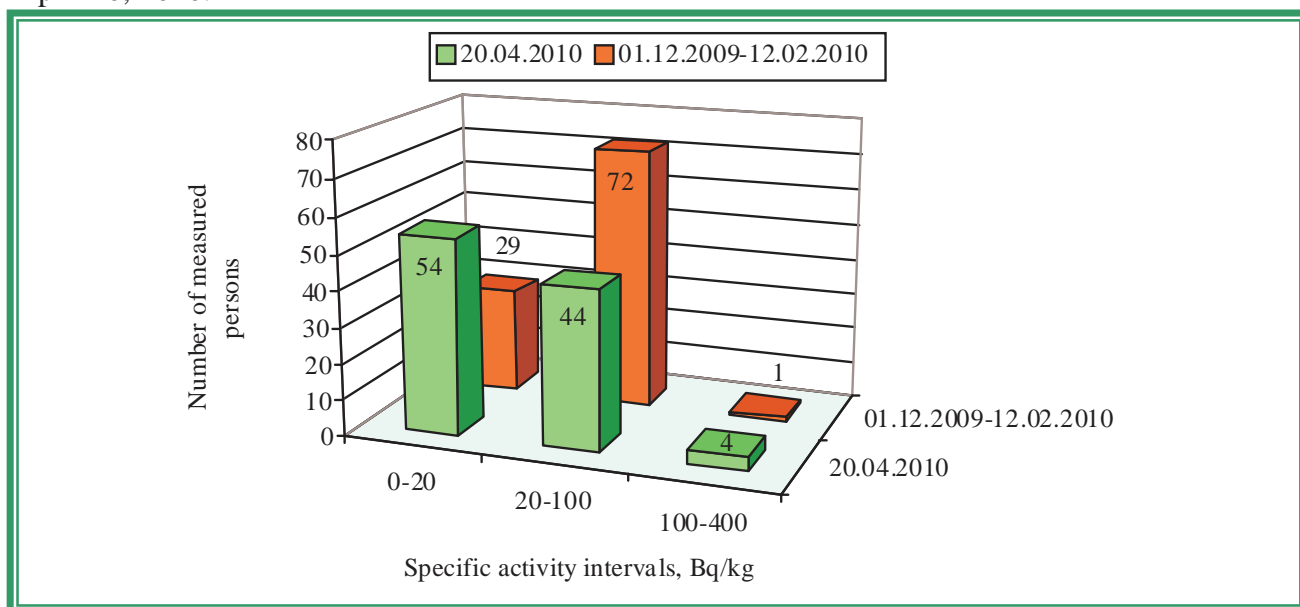


Figure 3 – Diagram of the interval ^{137}Cs specific activity distribution in children in the Zalesye secondary school and kindergarten of Chechersk district of Gomel region in accordance with the results of measurements dated to December 01, 2009, February 12, 2010 and April 20, 2010

MERKULOVICHI

Characteristics	Value	Source
^{137}Cs contamination density of the territory	4.39 Ci/km ²	Dose catalogue of the Ministry for Public Health Services of the Republic of Belarus, 2004
Number of inhabitants	500 persons	Merkulovichi village council, dated to 11.11.2008
External dose	0.53 mSv/a	Dose catalogue of the Ministry for Public Health Services of the Republic of Belarus, 2004
Internal dose	0.20 mSv/a	-----«-----
Cumulative dose	0.73 mSv/a	-----«-----

According to the data dated to March 2010 in the Merkulovichi secondary school there are 120 children, 18 teachers and 12 persons of another staff; in the kindergarten there are 14 children and 16 persons of another staff.

Children from following settlements go to the Merkulovichi secondary school and kindergarten: Botvinovo, Merkulovichi, Iskra, Zelyonaya Polyana and Progress.

December 01, 2009

The first measurement of children in the Merkulovichi secondary school and kindergarten of Chechersk district of Gomel region was performed in the school building. A total of measured persons was 120 persons (109 children and 11 adults).

Average ^{137}Cs specific activity in the whole group (n = 109): (21.3 ± 2.4) Bq/kg.

Average ^{137}Cs specific activity in the critical group (n = 15): (46.4 ± 16.5) Bq/kg.

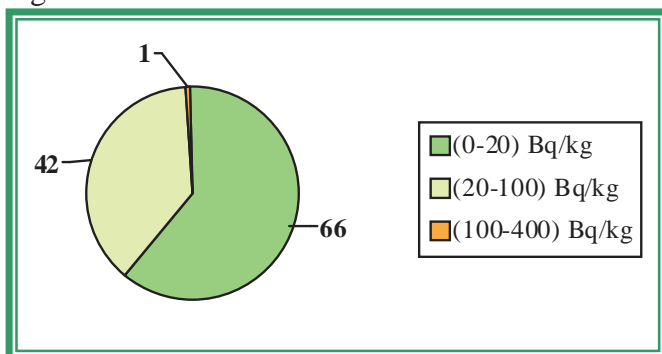
Median value in the whole group: 17.8 Bq/kg.

Median value in the critical group: 29.7 Bq/kg.

The table 4 demonstrates the maximal levels of ^{137}Cs specific activity (the critical group) according to the results of measurements dated to December 01, 2010.

No.	Surname Name Patronymic	Occupation	Sex	Weight, kg	Year of birth	Sp. activity, Bq/kg
1.	S.V.A.	SCHOOLBOY	M	29	2002	276.6
2.	M.M.V.	SCHOOLGIRL	F	42	1997	38.6
3.	P.E.I.	SCHOOLGIRL	F	19	2002	33.9
4.	Ya.A.A.	SCHOOLGIRL	F	19	2001	31.2
5.	K.S.S.	CHILD PRESCHOOL AGE	F	21	2003	31.0
6.	S.O.V.	CHILD PRESCHOOL AGE	F	19	2003	30.4
7.	K.T.V.	SCHOOLGIRL	F	26	2001	29.7
8.	D.Yu.A.	SCHOOLGIRL	F	43	1996	29.7
9.	G.A.A.	SCHOOLBOY	M	26	2002	29.3
10.	M.R.V.	SCHOOLBOY	M	29	2000	29.1
11.	Ya.D.S.	SCHOOLGIRL	F	30	2000	28.5
12.	D.V.A.	SCHOOLBOY	M	32	2000	27.8
13.	L.O.V.	SCHOOLGIRL	F	54	1994	27.3
14.	D.T.V.	SCHOOLGIRL	F	34	2000	26.4
15.	R.I.M.	CHILD PRESCHOOL AGE	F	21	2003	26.4

The figure 4 contains the diagram of the interval ^{137}Cs specific activity distribution in children in the Merkulovichi secondary school and kindergarten of Chechersk district of Gomel region in accordance with the results of measurements dated to December 01, 2009.



←Figure 4 - Diagram of the interval ^{137}Cs specific activity distribution in children in the Merkulovichi secondary school and kindergarten of Chechersk district of Gomel region in accordance with the results of measurements dated to December 01, 2009

On February 22, 2010 270 packings of the pectin preparation VITAPECT were given for children.

March 25, 2010

The second measurement of children in the Merkulovichi secondary school and kindergarten of Chechersk district of Gomel region was performed in the school building. A total of measured persons was 133 persons (130 children and 3 adults).

Average ^{137}Cs specific activity in the whole group (n = 130): (14.7 ± 0.5) Bq/kg.

Average ^{137}Cs specific activity in the critical group (n = 15): (25.6 ± 1.4) Bq/kg.

Median value in the whole group: 13.9 Bq/kg.

Median value in the critical group: 24.1 Bq/kg.

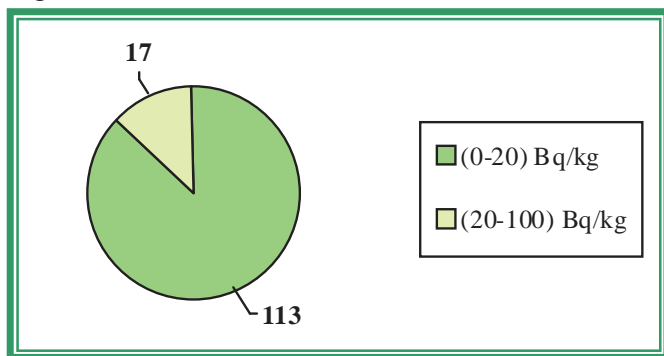
The table 5 demonstrates the maximal levels of ^{137}Cs specific activity (the critical group) according to the results of measurements dated to March 25, 2010.

Table 5

No.	Surname Name Patronymic	Occupation	Sex	Weight, kg	Year of birth	Sp. activity, Bq/kg
1.	F.A.M.	SCHOOLBOY	M	64	1993	37.2
2.	V.Yu.Yu.	SCHOOLGIRL	F	39	1999	35.1
3.	S.V.V.	SCHOOLBOY	M	64	1992	31.3
4.	Z.D.D.	CHILD PRESCHOOL AGE	F	14	2006	28.0
5.	G.D.A.	CHILD PRESCHOOL AGE	M	15	2007	27.1

6.	L.N.V.	SCHOOLBOY	M	56	1994	25.6
7.	D.D.A.	CHILD PRESCHOOL AGE	F	19	2004	24.2
8.	F.N.N.	SCHOOLBOY	M	20	2002	24.1
9.	H.V.N.	CHILD PRESCHOOL AGE	M	16	2006	22.7
10.	P.E.I.	SCHOOLGIRL	F	21	2002	22.4
11.	S.Ya.V.	CHILD PRESCHOOL AGE	F	18	2004	22.2
12.	L.A.M.	SCHOOLBOY	M	24	2001	21.6
13.	R.D.A.	SCHOOLGIRL	F	25	2003	20.9
14.	M.V.A.	SCHOOLBOY	M	64	1993	20.7
15.	V.V.V.	SCHOOLGIRL	F	18	2003	20.6

The figure 5 contains the diagram of the interval ^{137}Cs specific activity distribution in children in the Merkulovichi secondary school and kindergarten of Chechersk district of Gomel region in accordance with the results of measurements dated to March 25, 2010.



←Figure 5 - Diagram of the interval ^{137}Cs specific activity distribution in children in the Merkulovichi secondary school and kindergarten of Chechersk district of Gomel region in accordance with the results of measurements dated to March 25, 2010

To demonstrate the efficiency of the effects of pectin preparations there are comparative data on interval distribution of the specific activity of ^{137}Cs in children having taken VITAPECT and having passed two WBC measurements (on December 01, 2009 and March 25, 2010). This group consists of 108 children.

December 01, 2009

March 25, 2010

The first measurement of children in the Merkulovichi secondary school and kindergarten of Chechersk district of Gomel region was performed in the school building. A total of measured persons was 120 persons (109 children and 11 adults).

The second measurement of children in the Merkulovichi secondary school and kindergarten of Chechersk district of Gomel region was performed in the school building. A total of measured persons was 133 persons (130 children and 3 adults).

The data of statistical processing of the results of measurements of the group of children having passed two WBC measurements and having taken VITAPECT-T (108 children).

Average specific activity of ^{137}Cs :

after the first measurement: (19.0 ± 0.6) Bq/kg,

after the second measurement: (13.7 ± 0.4) Bq/kg.

Decrease of average specific activity of ^{137}Cs was 28%.

Increase of specific activity: in 15% children.

The same level of specific activity: in 18% children.

Reduction of specific activity: in 67% children.

The evaluation of the scientific significance according to T-Student criterion ($n = 108$): $t=9.93$. The received criterion $t > 1.96$; $p < 0.01$.

Median value after the first measurement: 17.7 Bq/kg.

Median value after the second measurement: 13.3 Bq/kg.

Decrease of median value of specific activity of ^{137}Cs was 25%.

The figure 6 contains the diagram of the interval ^{137}Cs specific activity distribution in children in the Merkulovichi secondary school and kindergarten of Chechersk district of Gomel region in accordance with the results of measurements dated to December 01, 2009 and March 25, 2010.

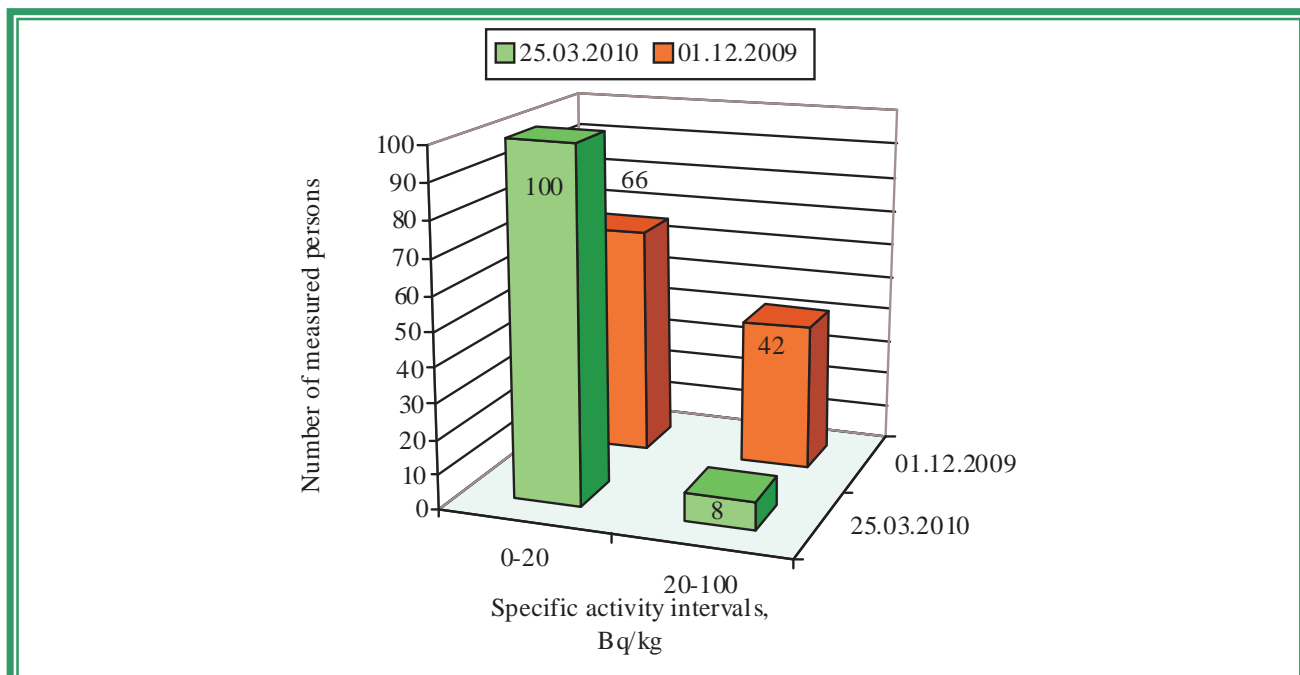


Figure 6 - Diagram of the interval ^{137}Cs specific activity distribution in children in the Merkulovichi secondary school and kindergarten of Chechersk district of Gomel region in accordance with the results of measurements dated to December 01, 2009 and March 25, 2010

NISIMKOVICHI

Characteristics	Value	Source
^{137}Cs contamination density of the territory	5.65 Ci/km ²	Dose catalogue of the Ministry for Public Health Services of the Republic of Belarus, 2004
Number of inhabitants	326 persons	Nisimkovichi village council, dated to November 2008
External dose	0.68 mSv/a	Dose catalogue of the Ministry for Public Health Services of the Republic of Belarus, 2004
Internal dose	1.20 mSv/a	-----«-----
Cumulative dose	1.88 mSv/a	-----«-----

According to the data dated to March 2010 in the Nisimkovichi kindergarten and secondary school there are 56 pupils, 16 children preschool age, 18 teachers and 15 persons of another staff.

Children from following settlements go to the Nisimkovichi kindergarten and secondary school: Nisimkovichi, Rudnya-Nisimkovichskaya, Gayok, Gatskoye and Klyuchevoy.

December 02, 2009

The first measurement of children in the Nisimkovichi secondary school and kindergarten of Chechersk district of Gomel region was performed in the school building. A total of measured persons was 71 persons (64 children and 7 adults).

Average ^{137}Cs specific activity in the whole group (n = 64): (34.8 ± 8.3) Bq/kg.

Average ^{137}Cs specific activity in the critical group (n = 15): (79.3 ± 33.8) Bq/kg.

Median value in the whole group: 23.4 Bq/kg.

Median value in the critical group: 36.4 Bq/kg.

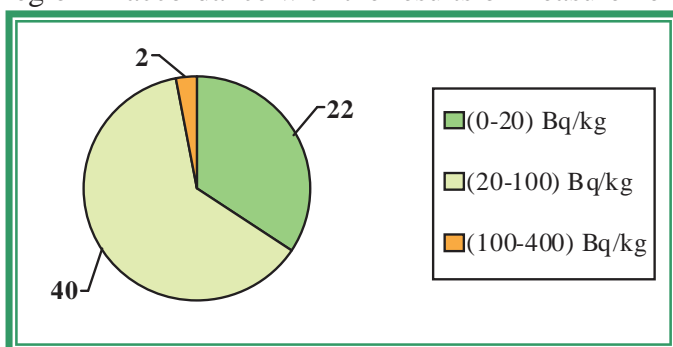
The table 6 demonstrates the maximal levels of ^{137}Cs specific activity (the critical group) according to the results of measurements dated to December 02, 2009.

Table 6

No.	Surname Name Patronymic	Occupation	Sex	Weight, kg	Year of birth	Sp. activity, Bq/kg
-----	-------------------------------	------------	-----	------------	---------------	---------------------

1.	B.D.N.	SCHOOLBOY	M	56	1993	539.5
2.	B.A.N.	CHILD PRESCHOOL AGE	F	15	2004	147.8
3.	K.V.L.	SCHOOLBOY	M	59	1993	74.8
4.	A.K.A.	SCHOOLGIRL	F	24	2002	45.9
5.	I.E.P.	SCHOOLBOY	M	54	1994	39.3
6.	S.A.L.	SCHOOLGIRL	F	28	1999	37.1
7.	L.V.A.	CHILD PRESCHOOL AGE	M	12	2006	36.4
8.	B.S.L.	CHILD PRESCHOOL AGE	M	18	2005	36.4
9.	S.V.L.	SCHOOLBOY	M	21	2001	34.4
10.	T.I.Yu.	SCHOOLGIRL	F	31	1998	34.1
11.	Z.M.V.	SCHOOLGIRL	F	20	2002	33.7
12.	A.D.N.	CHILD PRESCHOOL AGE	M	16	2005	33.5
13.	Z.A.S.	SCHOOLBOY	M	25	2000	33.3
14.	K.A.S.	CHILD PRESCHOOL AGE	F	21	2003	31.7
15.	S.V.V.	SCHOOLBOY	M	27	2000	31.4

The figure 7 contains the diagram of the interval ^{137}Cs specific activity distribution in children in the Nisimkovichi secondary school and kindergarten of Chechersk district of Gomel region in accordance with the results of measurements dated to December 02, 2009.



←Figure 7 - Diagram of the interval ^{137}Cs specific activity distribution in children in the Nisimkovichi secondary school and kindergarten of Chechersk district of Gomel region in accordance with the results of measurements dated to December 02, 2009

On February 22, 2010 140 packings of the pectin preparation VITAPECT were given for children.

April 22, 2010

The second measurement of children in the Nisimkovichi secondary school and kindergarten of Chechersk district of Gomel region was performed in the school building. A total of measured persons was 70 persons (64 children and 6 adults).

Average ^{137}Cs specific activity in the whole group (n = 64): (20.1 ± 1.5) Bq/kg.

Average ^{137}Cs specific activity in the critical group (n = 15): (34.5 ± 4.6) Bq/kg.

Median value in the whole group: 17.0 Bq/kg.

Median value in the critical group: 27.7 Bq/kg.

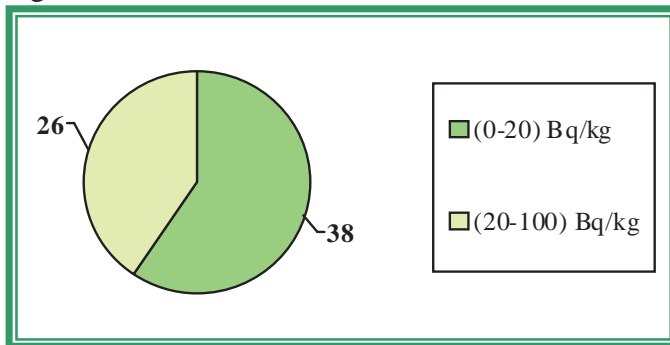
The table 7 demonstrates the maximal levels of ^{137}Cs specific activity (the critical group) according to the results of measurements dated to September 22, 2010.

Table 7

No.	Surname Name Patronymic	Occupation	Sex	Weight, kg	Year of birth	Sp. activity, Bq/kg
1.	K.V.L.	SCHOOLBOY	M	60	1993	93.6
2.	M.A.M.	SCHOOLBOY	M	64	1994	45.4
3.	S.E.S.	CHILD PRESCHOOL AGE	M	14	2007	44.7
4.	B.A.N.	CHILD PRESCHOOL AGE	F	15	2004	39.5
5.	B.S.L.	CHILD PRESCHOOL AGE	M	19	2005	36.0
6.	H.Yu.N.	CHILD PRESCHOOL AGE	F	16	2005	28.3
7.	A.D.A.	SCHOOLBOY	M	28	2002	27.8
8.	A.K.A.	SCHOOLGIRL	F	27	2002	27.7
9.	L.V.A.	CHILD PRESCHOOL AGE	M	13	2006	26.5
10.	K.V.M.	SCHOOLGIRL	F	24	2003	26.2
11.	T.I.Yu.	SCHOOLGIRL	F	33	1998	25.9
12.	B.E.P.	SCHOOLGIRL	F	22	2001	24.9
13.	V.S.I.	SCHOOLBOY	M	15	2007	24.4

14.	A.V.A.	CHILD PRESCHOOL AGE	F	20	2005	23.7
15.	K.K.V.	CHILD PRESCHOOL AGE	F	16	2005	22.9

The figure 8 contains the diagram of the interval ^{137}Cs specific activity distribution in children in the Nisimkovichi secondary school and kindergarten of Chechersk district of Gomel region in accordance with the results of measurements dated to April 22, 2010.



←Figure 8 – Diagram of the interval ^{137}Cs specific activity distribution in children in the Nisimkovichi secondary school and kindergarten of Chechersk district of Gomel region in accordance with the results of measurements dated to April 22, 2010

To demonstrate the efficiency of the effects of pectin preparations there are comparative data on interval distribution of the specific activity of ^{137}Cs in children having taken VITAPECT and having passed two WBC measurements (on December 02, 2009 and April 22, 2010). This group consists of 57 children.

December 02, 2009

April 22, 2010

The first measurement of children in the Nisimkovichi secondary school and kindergarten of Chechersk district of Gomel region was performed in the school building. A total of measured persons was 71 persons (64 children and 7 adults).

The second measurement of children in the Nisimkovichi secondary school and kindergarten of Chechersk district of Gomel region was performed in the school building. A total of measured persons was 70 persons (64 children and 6 adults).

The data of statistical processing of the results of measurements of the group of children having passed two WBC measurements and having taken VITAPECT-T (57 children).

Average specific activity of ^{137}Cs :

after the first measurement: (27.4 ± 2.5) Bq/kg,

after the second measurement: (19.6 ± 1.6) Bq/kg.

Decrease of average specific activity of ^{137}Cs was 28%.

Increase of specific activity: in 4% children.

The same level of specific activity: in 82% children.

Reduction of specific activity: in 82% children.

The evaluation of the scientific significance according to T-Student criterion ($n = 57$): $t=3.73$. The received criterion $t > 1.96$; $p < 0.01$.

Median value after the first measurement: 24.7 Bq/kg.

Median value after the second measurement: 16.8 Bq/kg.

Decrease of median value of specific activity of ^{137}Cs was 32%.

The figure 9 contains the diagram of the interval ^{137}Cs specific activity distribution in children in the Nisimkovichi secondary school and kindergarten of Chechersk district of Gomel region in accordance with the results of measurements dated to December 02, 2009 and April 22, 2010.

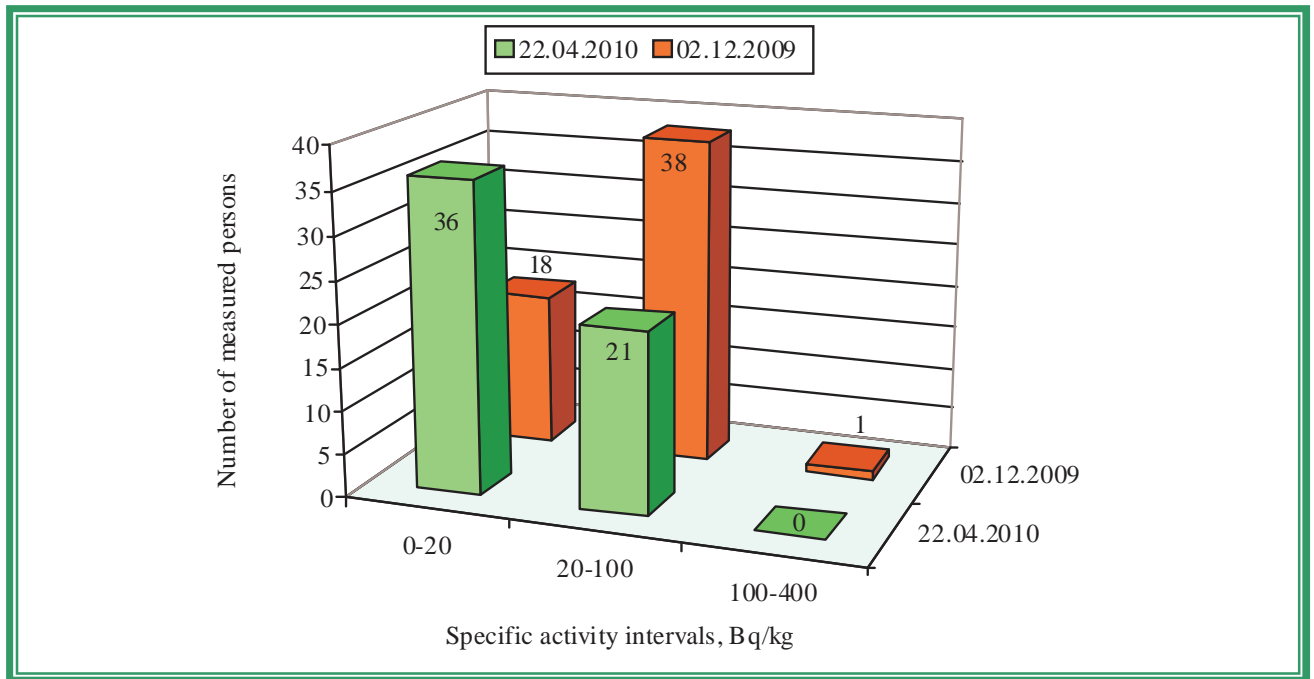


Figure 9 contains the diagram of the interval ^{137}Cs specific activity distribution in children in the Nisimkovichi secondary school and kindergarten of Chechersk district of Gomel region in accordance with the results of measurements dated to December 02, 2009 and April 22, 2010

POLESYE

Characteristics	Value	Source
^{137}Cs contamination density of the territory	5.02 Ci/km ²	Dose catalogue of the Ministry for Public Health Services of the Republic of Belarus, 2004
Number of inhabitants	522 persons	Polesye village council, dated to October 2008
External dose	0.60 mSv/a	Dose catalogue of the Ministry for Public Health Services of the Republic of Belarus, 2004
Internal dose	0.70 mSv/a	-----«-----
Cumulative dose	1.30 mSv/a	-----«-----

According to the data dated to March 2010 in the Polesye secondary school there are 84 children, 20 teachers, 14 persons of another staff; in the kindergarten there are 19 children and 6 persons of another staff.

Children from following settlements go to the Nisimkovichi kindergarten and secondary school: Nisimkovichi, Rudnya-Nisimkovichskaya, Gayok, Gatskoye and Klyuchevoy.

February 09, 2010

The first measurement of children in the Polesye secondary school and kindergarten of Chechersk district of Gomel region was performed in the school building. A total of measured persons was 81 persons (77 children and 4 adults).

Average ^{137}Cs specific activity in the whole group (n = 77): (34.3 ± 3.1) Bq/kg.

Average ^{137}Cs specific activity in the critical group (n = 15): (68.6 ± 12.4) Bq/kg.

Median value in the whole group: 28.6 Bq/kg.

Median value in the critical group: 46.9 Bq/kg.

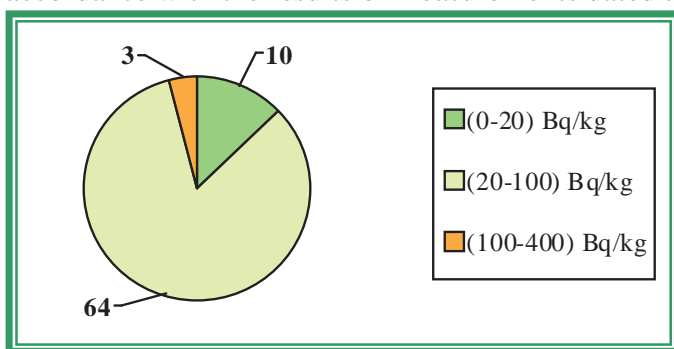
The table 8 demonstrates the maximal levels of ^{137}Cs specific activity (the critical group) according to the results of measurements dated to February 09, 2010.

Table 8

No.	Surname Name Patronymic	Occupation	Sex	Weight, kg	Year of birth	Sp. activity, Bq/kg
-----	-------------------------------	------------	-----	------------	---------------	---------------------

1.	P.S.N.	SCHOOLBOY	M	64	1993	207.8
2.	L.M.A.	SCHOOLGIRL	F	27	1999	130.7
3.	K.A.I.	SCHOOLBOY	M	69	1993	118.4
4.	P.A.V.	SCHOOLBOY	M	69	1994	74.9
5.	L.E.V.	CHILD PRESCHOOL AGE	F	17	2005	57.7
6.	G.O.V.	SCHOOLGIRL	F	60	1996	48.8
7.	A.A.P.	SCHOOLBOY	M	20	2002	47.0
8.	K.M.A.	SCHOOLBOY	M	24	2001	46.9
9.	P.Yu.A.	SCHOOLBOY	M	20	2003	46.1
10.	Z.D.A.	CHILD PRESCHOOL AGE	F	19	2006	44.8
11.	L.A.P.	CHILD PRESCHOOL AGE	M	18	2005	43.2
12.	L.D.A.	SCHOOLBOY	M	23	2002	42.0
13.	Yu.I.L.	CHILD PRESCHOOL AGE	M	20	2005	41.1
14.	K.O.S.	SCHOOLGIRL	F	46	1998	40.5
15.	Z.P.V.	SCHOOLGIRL	F	47	1997	39.0

The figure 10 contains the diagram of the interval ^{137}Cs specific activity distribution in children in the Polesye secondary school and kindergarten of Chechersk district of Gomel region in accordance with the results of measurements dated to February 09, 2010.



←Figure 10 – Diagram of the interval ^{137}Cs specific activity distribution in children in the Polesye secondary school and kindergarten of Chechersk district of Gomel region in accordance with the results of measurements dated to February 09, 2010

On February 22, 2010 206 packings of the pectin preparation VITAPECT were given for children.

March 24, 2010

The second measurement of children in the Polesye secondary school and kindergarten of Chechersk district of Gomel region was performed in the school building. A total of measured persons was 101 persons (95 children and 6 adults).

Average ^{137}Cs specific activity in the whole group (n = 95): (25.5 ± 2.4) Bq/kg.

Average ^{137}Cs specific activity in the critical group (n = 15): (67.5 ± 9.1) Bq/kg.

Median value in the whole group: 18.7 Bq/kg.

Median value in the critical group: 54.4 Bq/kg.

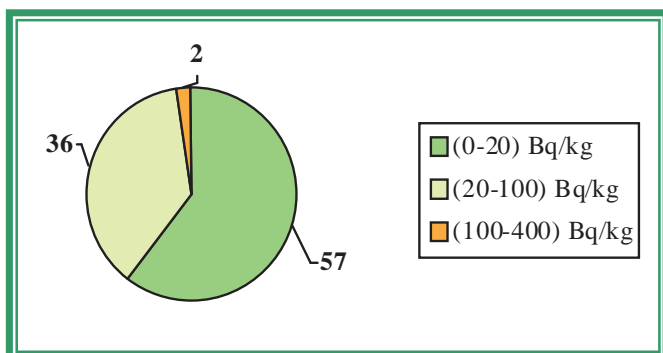
The table 1 demonstrates the maximal levels of ^{137}Cs specific activity (the critical group) according to the results of measurements dated to March 24, 2010.

Table 1

No.	Surname Name Patronymic	Occupation	Sex	Weight, kg	Year of birth	Sp. activity, Bq/kg
1.	P.S.N.	SCHOOLBOY	M	64	1993	141.0
2.	K.A.I.	SCHOOLBOY	M	69	1993	139.6
3.	K.O.S.	SCHOOLGIRL	F	46	1998	91.1
4.	L.M.A.	SCHOOLGIRL	F	28	1999	83.8
5.	Yu.A.A.	SCHOOLBOY	M	63	1993	76.5
6.	P.A.V.	SCHOOLBOY	M	69	1994	73.3
7.	B.Yu.L.	SCHOOLGIRL	F	52	1992	70.9
8.	Z.I.N.	SCHOOLBOY	M	64	1994	54.4
9.	G.O.V.	SCHOOLGIRL	F	60	1996	52.0
10.	Yu.A.A.	SCHOOLGIRL	F	45	1998	51.1
11.	G.A.A.	SCHOOLGIRL	F	65	1995	39.5
12.	K.M.A.	SCHOOLBOY	M	26	2001	37.9
13.	R.M.V.	SCHOOLGIRL	F	44	2000	35.7

14.	G.A.V.	SCHOOLBOY	M	59	1995	33.8
15.	L.D.A.	SCHOOLBOY	M	21	2002	32.4

The figure 11 contains the diagram of the interval ^{137}Cs specific activity distribution in children in the Polesye secondary school and kindergarten of Chechersk district of Gomel region in accordance with the results of measurements dated to March 24, 2010.



←Figure 11 - Diagram of the interval ^{137}Cs specific activity distribution in children in the Polesye secondary school and kindergarten of Chechersk district of Gomel region in accordance with the results of measurements dated to March 24, 2010

To demonstrate the efficiency of the effects of pectin preparations there are comparative data on interval distribution of the specific activity of ^{137}Cs in children having taken VITAPECT and having passed two WBC measurements (on December 09, 2010 and March 24, 2010). This group consists of 75 children.

February 09, 2010

March 24, 2010

The first measurement of children in the Polesye secondary school and kindergarten of Chechersk district of Gomel region was performed in the school building. A total of measured persons was 81 persons (77 children and 4 adults).

The second measurement of children in the Polesye secondary school and kindergarten of Chechersk district of Gomel region was performed in the school building. A total of measured persons was 101 persons (95 children and 6 adults).

The data of statistical processing of the results of measurements of the group of children having passed two WBC measurements and having taken VITAPECT-T (75 children).

Average specific activity of ^{137}Cs :

after the first measurement: (34.7 ± 3.2) Bq/kg,

after the second measurement: (26.0 ± 2.9) Bq/kg.

Decrease of average specific activity of ^{137}Cs was 25%.

Increase of specific activity: in 14% children.

The same level of specific activity: in 6% children.

Reduction of specific activity: in 80% children.

The evaluation of the scientific significance according to T-Student criterion ($n = 75$): $t=2.84$. The received criterion $t > 1.96$; $p < 0.01$.

Median value after the first measurement: 28.6 Bq/kg.

Median value after the second measurement: 18.7 Bq/kg.

Decrease of median value of specific activity of ^{137}Cs was 35%.

The figure 12 contains the diagram of the interval ^{137}Cs specific activity distribution in children in the Polesye secondary school and kindergarten of Chechersk district of Gomel region in accordance with the results of measurements dated to February 09, 2010 and March 24, 2010.

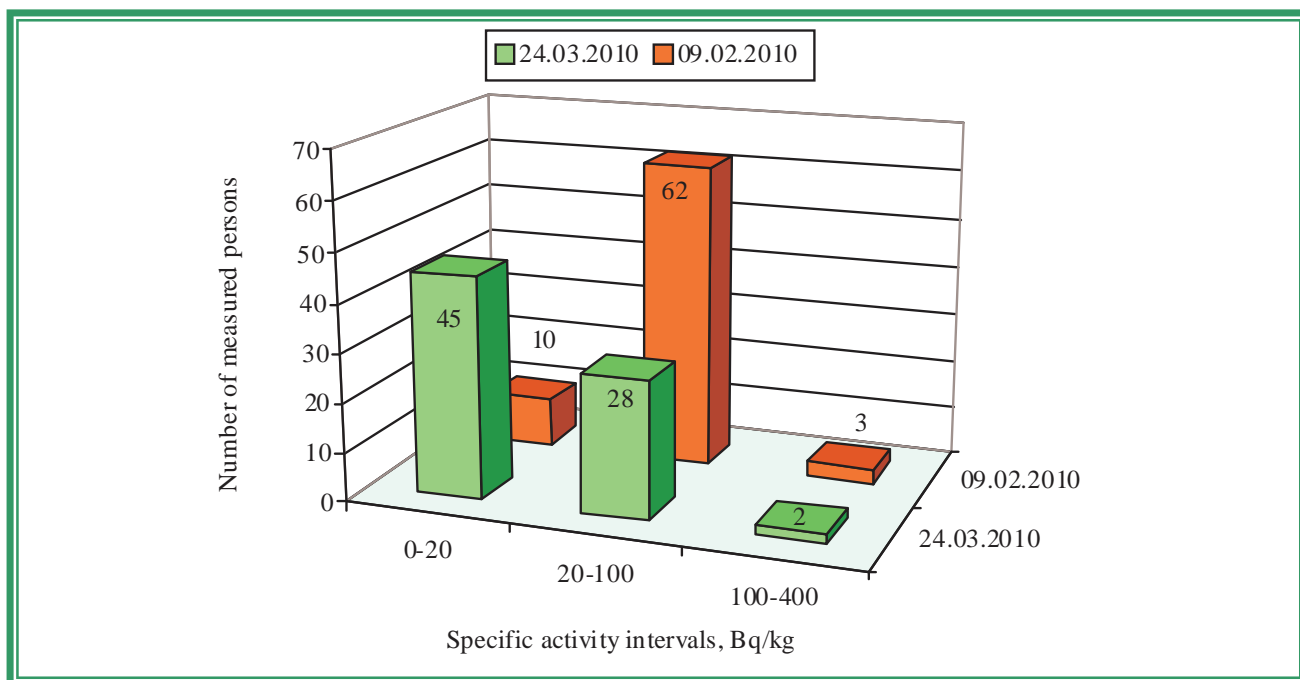


Figure 12 – Diagram of the interval ^{137}Cs specific activity distribution in children in the Polesye secondary school and kindergarten of Chechersk district of Gomel region in accordance with the results of measurements dated to February 09, 2010 and March 24, 2010

ROVKOVICHI

Characteristics	Value	Source
^{137}Cs contamination density of the territory	11.74 Ci/km ²	Dose catalogue of the Ministry for Public Health Services of the Republic of Belarus, 2004
Number of inhabitants	330 persons	Rovkovichi village council, dated to 01.01.2010
External dose	1.41 mSv/a	Dose catalogue of the Ministry for Public Health Services of the Republic of Belarus, 2004
Internal dose	1.60 mSv/a	-----<-----
Cumulative dose	3.01 mSv/a	-----<-----

According to the data dated to February 2010 in the Rovkovichi kindergarten and secondary school there are 83 pupils, 15 children preschool age, 28 teachers and 15 persons of another staff.

Children from following settlements go to the Rovkovichi kindergarten and secondary school: Rovkovichi, Korablichy, Krutoye, Makrel and Zalavye.

February 10, 2010

The first measurement of children in the Rovkovichi secondary school and kindergarten of Chechersk district of Gomel region was performed in the school building. A total of measured persons was 77 persons (67 children and 10 adults).

Average ^{137}Cs specific activity in the whole group (n = 67): (24.2 ± 1.1) Bq/kg.

Average ^{137}Cs specific activity in the critical group (n = 15): (35.7 ± 0.8) Bq/kg.

Median value in the whole group: 23.9 Bq/kg.

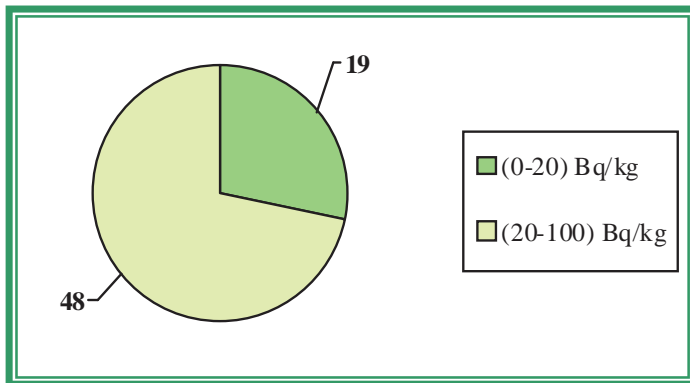
Median value in the critical group: 35.6 Bq/kg.

The table 9 demonstrates the maximal levels of ^{137}Cs specific activity (the critical group) according to the results of measurements dated to February 10, 2010.

Table 9

No.	Surname Name Patronymic	Occupation	Sex	Weight, kg	Year of birth	Sp. activity, Bq/kg
1.	A.M.L.	CHILD PRESCHOOL AGE	F	18	2007	40.9
2.	B.K.N.	SCHOOLGIRL	F	18	2002	40.9
3.	E.A.V.	CHILD PRESCHOOL AGE	M	23	2004	38.6
4.	H.I.A.	SCHOOLGIRL	F	18	2003	38.4
5.	P.M.S.	CHILD PRESCHOOL AGE	F	18	2005	38.2
6.	E.V.I.	SCHOOLGIRL	F	18	2001	36.8
7.	D.A.V.	SCHOOLGIRL	F	18	2002	36.0
8.	M.A.M.	SCHOOLBOY	M	35	1995	35.6
9.	D.P.V.	CHILD PRESCHOOL AGE	M	18	2005	34.5
10.	Z.Yu.I.	SCHOOLGIRL	F	50	1995	33.3
11.	E.D.I.	SCHOOLBOY	M	19	2003	32.7
12.	E.A.A.	CHILD PRESCHOOL AGE	F	17	2006	32.7
13.	R.A.I.	CHILD PRESCHOOL AGE	F	17	2006	32.2
14.	Ch.V.N.	SCHOOLGIRL	F	23	2001	32.2
15.	B.A.P.	SCHOOLGIRL	F	19	2003	31.9

The figure 13 contains the diagram of the interval ^{137}Cs specific activity distribution in children in the Polesye secondary school and kindergarten of Chechersk district of Gomel region in accordance with the results of measurements dated to February 10, 2010.



←Figure 13 contains the diagram of the interval ^{137}Cs specific activity distribution in children in the Polesye secondary school and kindergarten of Chechersk district of Gomel region in accordance with the results of measurements dated to February 10, 2010

On February 22, 2010 196 packings of the pectin preparation VITAPECT were given for children.

April 21, 2010

The second measurement of children in the Rovkovich secondary school and kindergarten of Chechersk district of Gomel region was performed in the school building. A total of measured persons was 83 persons (65 children and 18 adults).

Average ^{137}Cs specific activity in the whole group (n = 65): (13.7 ± 0.7) Bq/kg.

Average ^{137}Cs specific activity in the critical group (n = 15): (19.6 ± 0.6) Bq/kg.

Median value in the whole group: 14.7 Bq/kg.

Median value in the critical group: 19.0 Bq/kg.

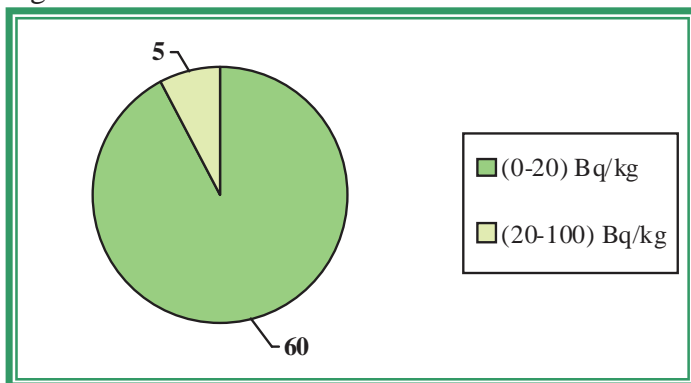
The table 10 demonstrates the maximal levels of ^{137}Cs specific activity (the critical group) according to the results of measurements dated to April 21, 2010.

Table 10

No.	Surname Name Patronymic	Occupation	Sex	Weight, kg	Year of birth	Sp. activity, Bq/kg
1.	M.D.L.	SCHOOLBOY	M	62	1994	24.1
2.	H.S.N.	SCHOOLBOY	M	52	1994	23.3
3.	Ch.V.N.	SCHOOLGIRL	F	24	2001	22.8
4.	R.D.V.	SCHOOLBOY	M	19	2003	22.6
5.	T.A.N.	SCHOOLBOY	M	49	1999	20.2
6.	T.D.N.	SCHOOLGIRL	F	91	1996	19.6
7.	M.V.S.	SCHOOLBOY	M	37	1998	19.4
8.	M.L.S.	SCHOOLGIRL	F	36	2000	19.0

9.	T.A.V.	SCHOOLGIRL	F	56	1993	18.8
10.	B.A.V.	SCHOOLGIRL	F	41	1998	18.4
11.	S.E.L.	SCHOOLGIRL	F	63	1993	17.7
12.	T.M.S.	SCHOOLBOY	M	25	2002	17.3
13.	H.A.A.	SCHOOLGIRL	F	23	2001	17.1
14.	Ya.Yu.V.	SCHOOLBOY	M	64	1994	17.0
15.	M.K.L.	SCHOOLBOY	M	41	1995	16.9

The figure 14 contains the diagram of the interval ^{137}Cs specific activity distribution in children in the Rovkovichi secondary school and kindergarten of Chechersk district of Gomel region in accordance with the results of measurements dated to April 21, 2010.



←Figure 14 contains the diagram of the interval ^{137}Cs specific activity distribution in children in the Rovkovichi secondary school and kindergarten of Chechersk district of Gomel region in accordance with the results of measurements dated to April 21, 2010

To demonstrate the efficiency of the effects of pectin preparations there are comparative data on interval distribution of the specific activity of ^{137}Cs in children having taken VITAPECT and having passed two WBC measurements (on February 10, 2010 and April 21, 2010). This group consists of 52 children.

February 10, 2010

April 21, 2010

The first measurement of children in the Rovkovichi secondary school and kindergarten of Chechersk district of Gomel region was performed in the school building. A total of measured persons was 77 persons (67 children and 10 adults).

The second measurement of children in the Rovkovichi secondary school and kindergarten of Chechersk district of Gomel region was performed in the school building. A total of measured persons was 83 persons (65 children and 18 adults).

The data of statistical processing of the results of measurements of the group of children having passed two WBC measurements and having taken VITAPECT-T (52 children).

Average specific activity of ^{137}Cs :

after the first measurement: (22.8 ± 1.2) Bq/kg,

after the second measurement: (13.7 ± 0.8) Bq/kg.

Decrease of average specific activity of ^{137}Cs was 40%.

Increase of specific activity: in 0% children.

The same level of specific activity: in 11% children.

Reduction of specific activity: in 89% children.

The evaluation of the scientific significance according to T-Student criterion (n = 52): t=8.86. The received criterion $t > 1.96$; $p < 0.01$.

Median value after the first measurement: 23.2 Bq/kg.

Median value after the second measurement: 14.8 Bq/kg.

Decrease of median value of specific activity of ^{137}Cs was 36%.

The figure 15 contains the diagram of the interval ^{137}Cs specific activity distribution in children in the Rovkovichi secondary school and kindergarten of Chechersk district of Gomel region in accordance with the results of measurements dated to February 10, 2010 and April 21, 2010.

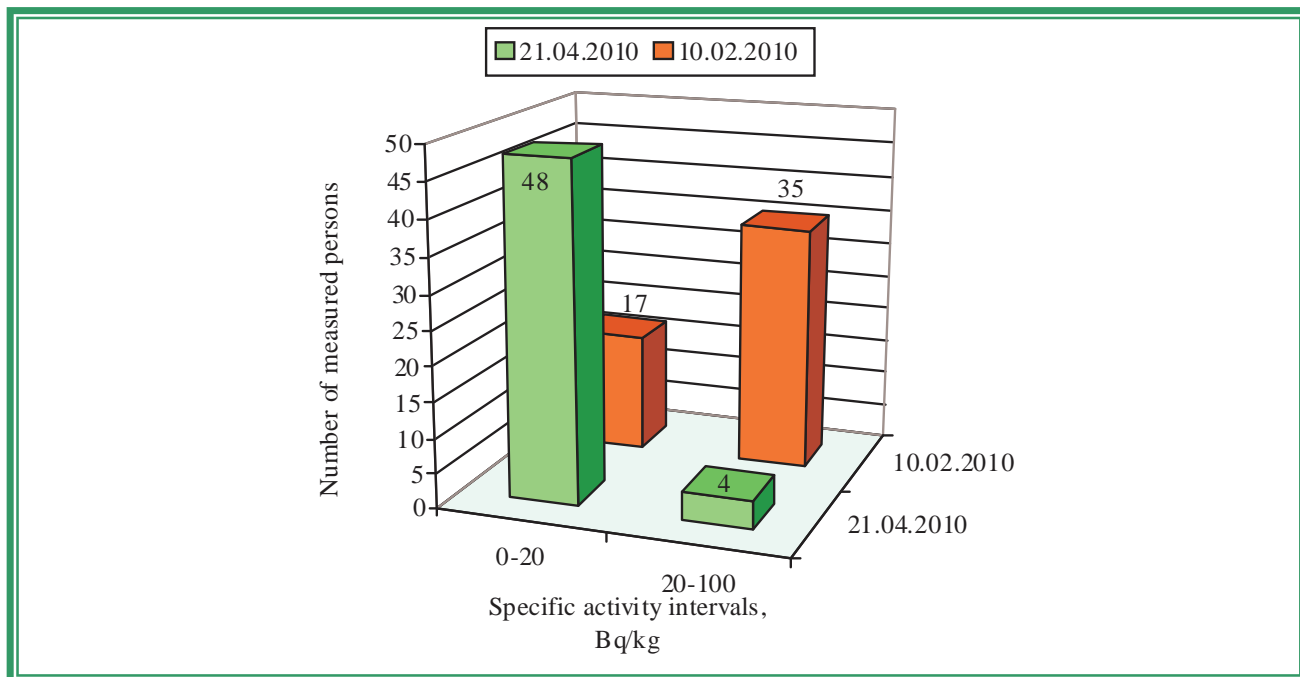


Figure 15 – Diagram of the interval ^{137}Cs specific activity distribution in children in the Rovkoviichi secondary school and kindergarten of Chechersk district of Gomel region in accordance with the results of measurements dated to February 10, 2010 and April 21, 2010

CHECHERSK, SECONDARY SCHOOL No.2

Characteristics	Value	Source
^{137}Cs contamination density of the territory	7.75 Ci/km ²	Dose catalogue of the Ministry for Public Health Services of the Republic of Belarus, 2004
Number of inhabitants	5657 persons	Chechersk executive committee, dated to 01.01.2010
External dose	0.93 mSv/a	Dose catalogue of the Ministry for Public Health Services of the Republic of Belarus, 2004
Internal dose	1.50 mSv/a	-----«-----
Cumulative dose	2.43 mSv/a	-----«-----

According to the data dated to January 2010 in the Chechersk secondary school No.2 there are 536 children, 65 teachers and 22 persons of another staff.

Children from following settlements go to the Chechersk secondary school No.2: Chechersk, Zalesye, Novozakharpolye, Sapriki, Otor, Gorodok, Edinstvo, Kovalyov Rog, Pokrovsky, Peredovik, Oktyabr, Motnevichi.

January 13-15, 2010

The first measurement of children in the Chechersk secondary school No.2 of Gomel region was performed in the school building. A total of measured persons was 482 persons (480 children and 2 adults).

Average ^{137}Cs specific activity in the whole group (n = 480): (24.6 ± 1.3) Bq/kg.
 Average ^{137}Cs specific activity in the critical group (n = 30): (83.1 ± 17.9) Bq/kg.
 Median value in the whole group: 21.1 Bq/kg.
 Median value in the critical group: 52.4 Bq/kg.

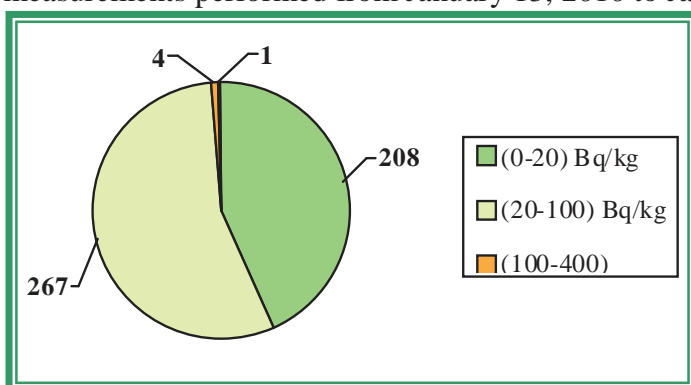
The table 11 demonstrates the maximal levels of ^{137}Cs specific activity (the critical group) according to the results of measurements performed from January 13, 2010 to January 15, 2010.

Table 11

No.	Surname Name Patronymic	Occupation	Sex	Weight, kg	Year of birth	Sp. activity, Bq/kg

1.	G.N.A.	SCHOOLBOY	M	24	2000	553.0
2.	B.Yu.G.	SCHOOLGIRL	F	44	1995	213.5
3.	S.P.V.	SCHOOLBOY	M	29	1998	164.1
4.	K.T.A.	SCHOOLGIRL	F	65	1995	146.6
5.	B.K.N.	SCHOOLGIRL	F	55	1994	132.7
6.	Sh.K.A.	SCHOOLGIRL	F	34	2000	83.6
7.	Ch.Yu.V.	SCHOOLGIRL	F	29	1998	74.8
8.	M.A.S.	SCHOOLGIRL	F	44	1995	62.9
9.	M.K.I.	SCHOOLGIRL	F	47	1996	62.4
10.	K.R.S.	SCHOOLBOY	M	33	1999	61.7
11.	K.V.V.	SCHOOLBOY	M	68	1995	60.9
12.	M.A.S.	SCHOOLGIRL	F	45	1995	60.1
13.	K.D.V.	SCHOOLBOY	M	42	1997	59.3
14.	Ya.V.S.	SCHOOLBOY	M	47	1996	55.0
15.	Ch.A.V.	SCHOOLGIRL	F	22	2003	53.3
16.	M.N.Yu.	SCHOOLBOY	M	56	1994	51.5
17.	K.I.N.	SCHOOLBOY	M	61	1995	49.1
18.	Sh.D.A.	SCHOOLBOY	M	27	2003	48.4
19.	M.V.P.	SCHOOLGIRL	F	52	1993	48.0
20.	S.D.V.	SCHOOLBOY	M	42	1998	45.8
21.	K.E.M.	SCHOOLGIRL	F	52	1993	45.5
22.	I.A.S.	SCHOOLGIRL	F	51	1995	45.4
23.	L.V.P.	SCHOOLBOY	M	34	1998	40.9
24.	H.A.V.	SCHOOLGIRL	F	58	1996	40.8
25.	G.I.S.	SCHOOLBOY	M	33	2002	39.5
26.	K.K.S.	SCHOOLGIRL	F	33	2001	39.4
27.	K.A.A.	SCHOOLBOY	M	56	1995	39.3
28.	K.M.E.	SCHOOLGIRL	F	49	1995	39.0
29.	H.A.V.	SCHOOLBOY	M	42	1997	38.9
30.	K.A.A.	SCHOOLGIRL	F	57	1994	38.9

The figure 16 contains the diagram of the interval ^{137}Cs specific activity distribution in children in the Chechersk secondary school No.2 of Gomel region in accordance with the results of measurements performed from January 13, 2010 to January 15, 2010.



←Figure 16 contains the diagram of the interval ^{137}Cs specific activity distribution in children in the Chechersk secondary school No.2 of Gomel region in accordance with the results of measurements performed from January 13, 2010 to January 15, 2010

On February 22, 2010 818 packings of the pectin preparation VITAPECT were given for children.

March 23-24, 2010

The second measurement of children in the Chechersk secondary school No.2 of Gomel region was performed in the school building. A total of measured persons was 401 persons (398 children and 3 adults).

Average ^{137}Cs specific activity in the whole group (n = 398): (18.8 ± 0.7) Bq/kg.

Average ^{137}Cs specific activity in the critical group (n = 30): (46.7 ± 7.1) Bq/kg.

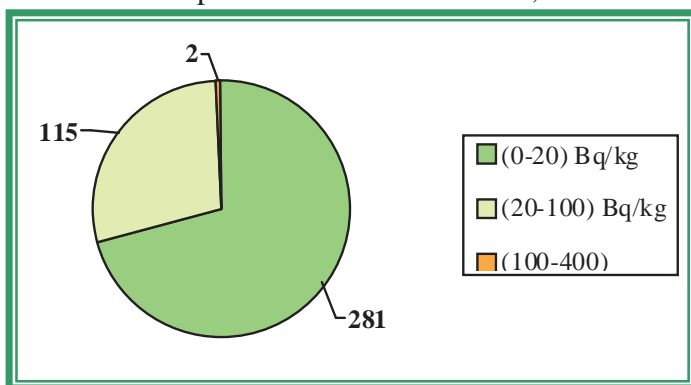
Median value in the whole group: 16.8 Bq/kg.

Median value in the critical group: 29.6 Bq/kg.

The table 12 demonstrates the maximal levels of ^{137}Cs specific activity (the critical group) according to the results of measurements performed from March 23, 2010 to March 24, 2010.

No.	Surname Name Patronymic	Occupation	Sex	Weight, kg	Year of birth	Sp. activity, Bq/kg
1.	Z.E.S.	SCHOOLGIRL	F	54	1993	206.7
2.	B.Yu.G.	SCHOOLGIRL	F	44	1995	119.6
3.	G.N.A.	SCHOOLBOY	M	24	2000	95.9
4.	Sch.V.S.	SCHOOLBOY	M	56	1996	95.7
5.	Ch.Yu.V.	SCHOOLGIRL	F	30	1998	73.5
6.	K.T.A.	SCHOOLGIRL	F	58	1995	73.0
7.	B.K.N.	SCHOOLGIRL	F	56	1994	52.4
8.	K.V.V.	SCHOOLBOY	M	68	1995	46.8
9.	Ch.A.V.	SCHOOLGIRL	F	23	2003	42.6
10.	S.Yu.G.	SCHOOLGIRL	F	19	2001	35.1
11.	H.A.V.	SCHOOLGIRL	F	60	1996	32.8
12.	G.I.I.	SCHOOLBOY	M	36	2000	32.4
13.	M.D.S.	SCHOOLBOY	M	32	2000	31.0
14.	K.M.E.	SCHOOLGIRL	F	48	1995	30.8
15.	A.A.A.	SCHOOLBOY	M	24	2002	29.8
16.	K.I.V.	SCHOOLBOY	M	53	1995	29.5
17.	K.E.S.	SCHOOLGIRL	F	38	1999	28.5
18.	H.E.A.	SCHOOLGIRL	F	34	2001	27.8
19.	K.A.A.	SCHOOLBOY	M	56	1995	27.6
20.	T.D.V.	SCHOOLBOY	M	26	2003	27.6
21.	L.V.V.	SCHOOLBOY	M	31	1997	27.5
22.	K.S.A.	SCHOOLBOY	M	56	1995	27.0
23.	Ch.D.Yu.	SCHOOLGIRL	F	23	2002	26.7
24.	G.M.G.	SCHOOLGIRL	F	48	1994	26.6
25.	H.V.S.	SCHOOLGIRL	F	50	1993	25.9
26.	A.S.G.	SCHOOLBOY	M	33	2000	25.7
27.	T.Yu.A.	SCHOOLBOY	M	46	1997	25.7
28.	K.D.A.	SCHOOLBOY	M	28	2001	25.6
29.	M.I.S.	SCHOOLBOY	M	25	2002	25.6
30.	I.A.S.	SCHOOLGIRL	F	49	1995	25.4

The figure 17 contains the diagram of the interval ^{137}Cs specific activity distribution in children in the Chechersk secondary school No.2 of Gomel region in accordance with the results of measurements performed from March 23, 2010 to March 24, 2010.



←Figure 17 - Diagram of the interval ^{137}Cs specific activity distribution in children in the Chechersk secondary school No.2 of Gomel region in accordance with the results of measurements performed from March 23, 2010 to March 24, 2010

Hereafter there are comparative data on interval distribution of the specific activity of ^{137}Cs in children having passed two WBC measurements (from January 13, 2010 to January 15, 2010 and from March 23, 2010 to March 24, 2010). This group consists of 359 children.

January 13-15, 2010 March 23-24, 2010

The first measurement of children in the Chechersk secondary school No.2 of Gomel region was performed in the school building. A total of measured persons was 482 persons (480 children and 2 adults).

The second measurement of children in the Chechersk secondary school No.2 of Gomel region was performed in the school building. A total of measured persons was 401 persons (398 children and 3 adults).

After completion of the first measurement 818 packings of the vitaminous drink “Vitapect-T” were given but they were not given to children intime. On March 24, 2010 56 packings of “Vitapect-T” were given to children having maximal ^{137}Cs contents, thye rest 762 packings of “Vitapect-T” were returned to the Institute BELRAD according to the protocol and sent tot the schools of Narovlya district of Gomel region.

The data of statistical processing of the results of measurements of the group of children having passed two WBC measurements and having taken VITAPECT-T (359 children).

Average specific activity of ^{137}Cs :

after the first measurement: (25.1 ± 1.7) Bq/kg,

after the second measurement: (18.3 ± 0.6) Bq/kg.

Decrease of average specific activity of ^{137}Cs was 27%.

Increase of specific activity: in 1% children.

The same level of specific activity: in 43% children.

Reduction of specific activity: in 56% children.

The evaluation of the scientific significance according to T-Student criterion ($n = 359$): $t=5.35$. The received criterion $t > 1.96$; $p < 0.01$.

Median value after the first measurement: 21.3 Bq/kg.

Median value after the second measurement: 16.7 Bq/kg.

Decrease of median value of specific activity of ^{137}Cs was 22%.

The figure 18 contains the diagram of the interval ^{137}Cs specific activity distribution in children in the Chechersk secondary school No.2 of Gomel region in accordance with the results of measurements performed from Janaury 13, 2010 to January 15, 2010 and from March 23, 2010 to March 24, 2010.

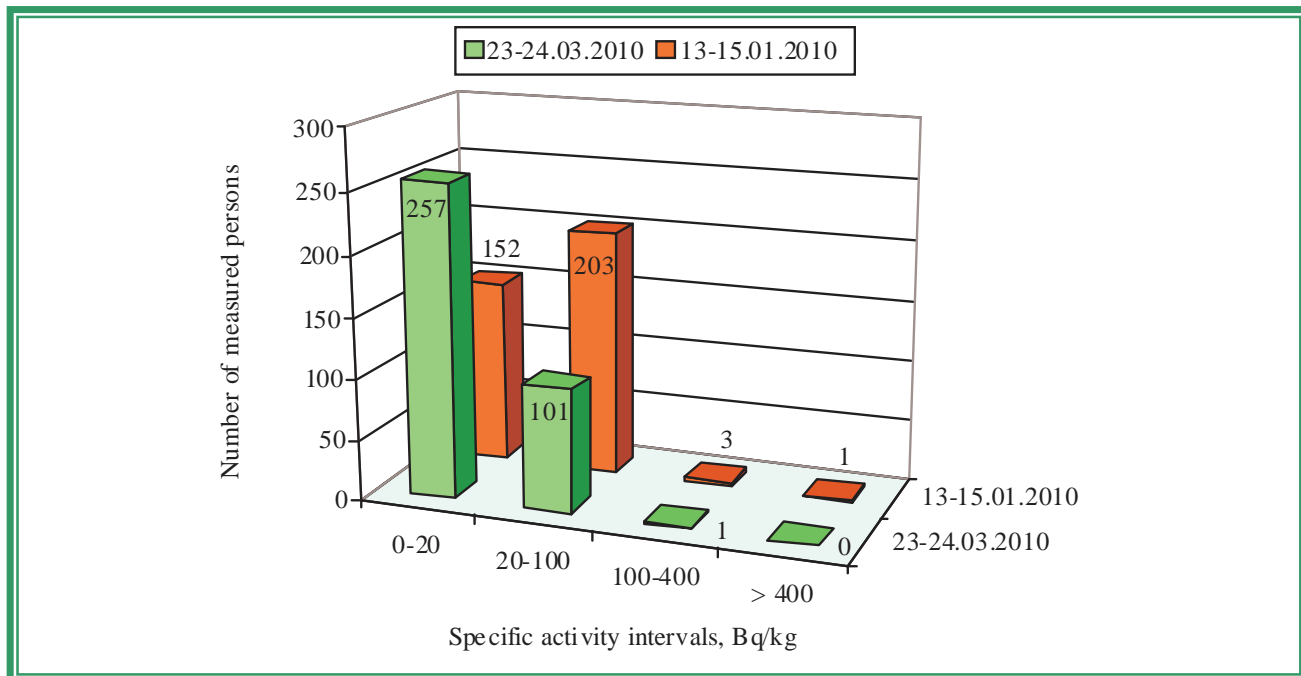


Figure 18 contains the diagram of the interval ^{137}Cs specific activity distribution in children in the Chechersk secondary school No.2 of Gomel region in accordance with the results of measurements performed from Janaury 13, 2010 to January 15, 2010 and from March 23, 2010 to March 24, 2010